

A3409

Leader in Biomolecular Solutions for Life Science



Thyroglobulin Rabbit mAb

Catalog No.: A3409

Recombinant

Basic Information

Observed MW

Calculated MW

305kDa

Category

SMab Recombinant Monoclonal
Antibody

Applications

IHC-P,IF/ICC,ELISA

Cross-Reactivity

Human,Mouse,Rat

CloneNo number

ARC1972

Background

Thyroglobulin (Tg) is a glycoprotein homodimer produced predominantly by the thyroid gland. It acts as a substrate for the synthesis of thyroxine and triiodothyronine as well as the storage of the inactive forms of thyroid hormone and iodine. Thyroglobulin is secreted from the endoplasmic reticulum to its site of iodination, and subsequent thyroxine biosynthesis, in the follicular lumen. Mutations in this gene cause thyroid dysmorphogenesis, manifested as goiter, and are associated with moderate to severe congenital hypothyroidism. Polymorphisms in this gene are associated with susceptibility to autoimmune thyroid diseases (AITD) such as Graves disease and Hashimoto thyroiditis.

Recommended Dilutions

IHC-P 1:50 - 1:200

IF/ICC 1:50 - 1:200

ELISA Recommended starting concentration is 1 µg/mL. Please optimize the concentration based on your specific assay requirements.

Immunogen Information

Gene ID

7038

Swiss Prot

P01266

Immunogen

Recombinant protein (or fragment). This information is considered to be commercially sensitive.

Synonyms

TGN; AITD3; Thyroglobulin

Contact

 www.abclonal.com

Product Information

Source

Rabbit

Isotype

IgG

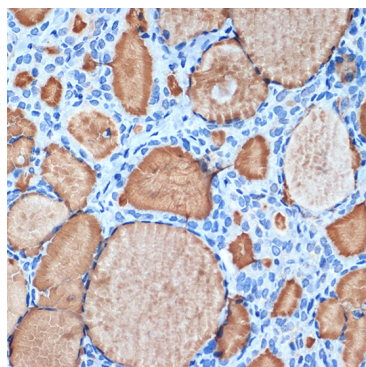
Purification

Affinity purification

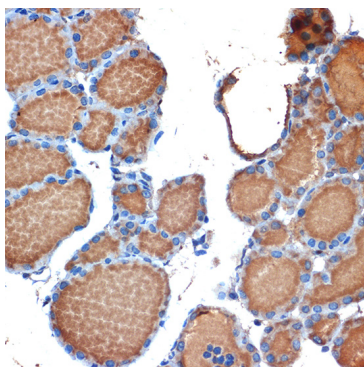
Storage

Store at -20°C. Avoid freeze / thaw cycles.

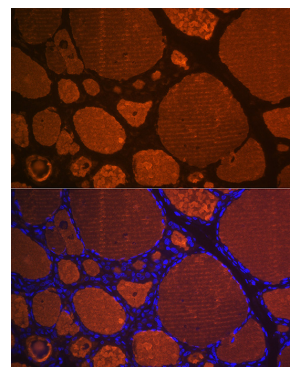
Buffer: PBS with 0.02% sodium azide, 0.05% BSA, 50% glycerol, pH7.3.



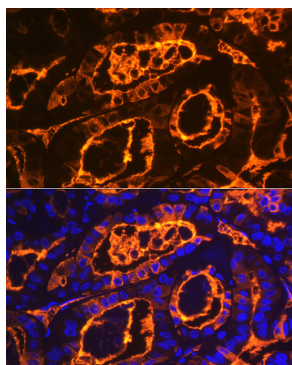
Immunohistochemistry analysis of paraffin-embedded Rat thyroid using Thyroglobulin Rabbit mAb (A3409) at dilution of 1:100 (40x lens). Microwave antigen retrieval performed with 0.01M Tris/EDTA Buffer (pH 9.0) prior to IHC staining.



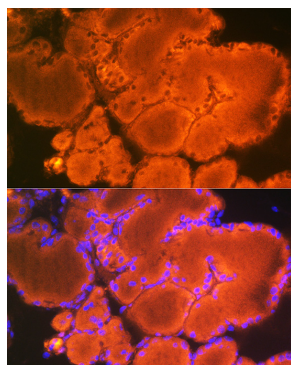
Immunohistochemistry analysis of paraffin-embedded Mouse thyroid using Thyroglobulin Rabbit mAb (A3409) at dilution of 1:100 (40x lens). Microwave antigen retrieval performed with 0.01M Tris/EDTA Buffer (pH 9.0) prior to IHC staining.



Immunofluorescence analysis of paraffin-embedded rat thyroid using Thyroglobulin Rabbit mAb (A3409) at dilution of 1:100 (40x lens). Secondary antibody: Cy3-conjugated Goat anti-Rabbit IgG (H+L) (AS007) at 1:500 dilution. Blue: DAPI for nuclear staining.



Immunofluorescence analysis of paraffin-embedded human thyroid using Thyroglobulin Rabbit mAb (A3409) at dilution of 1:100 (40x lens). Secondary antibody: Cy3-conjugated Goat anti-Rabbit IgG (H+L) (AS007) at 1:500 dilution. Blue: DAPI for nuclear staining.



Immunofluorescence analysis of paraffin-embedded mouse thyroid using Thyroglobulin Rabbit mAb (A3409) at dilution of 1:100 (40x lens). Secondary antibody: Cy3-conjugated Goat anti-Rabbit IgG (H+L) (AS007) at 1:500 dilution. Blue: DAPI for nuclear staining.