

A3285

Leader in Biomolecular Solutions for Life Science



## KLF5 Rabbit pAb

Catalog No.: A3285

### Basic Information

**Observed MW**

56kDa

**Calculated MW**

51kDa

**Category**

Polyclonal Antibody

**Applications**

WB,IF/ICC,FC

**Cross-Reactivity**

Human

### Background

This gene encodes a member of the Kruppel-like factor subfamily of zinc finger proteins. The encoded protein is a transcriptional activator that binds directly to a specific recognition motif in the promoters of target genes. This protein acts downstream of multiple different signaling pathways and is regulated by post-translational modification. It may participate in both promoting and suppressing cell proliferation. Expression of this gene may be changed in a variety of different cancers and in cardiovascular disease. Alternative splicing results in multiple transcript variants.

### Recommended Dilutions

<b>WB</b>	1:1000 - 1:2000
<b>IF/ICC</b>	1:50 - 1:200
<b>FC</b>	1:20 - 1:50

### Immunogen Information

**Gene ID**

688

**Swiss Prot**

Q13887

**Immunogen**

A synthetic peptide of human KLF5

**Synonyms**

CKLF; IKLF; BTEB2; KLF5

### Contact



[www.abclonal.com](http://www.abclonal.com)

### Product Information

**Source**

Rabbit

**Isotype**

IgG

**Purification**

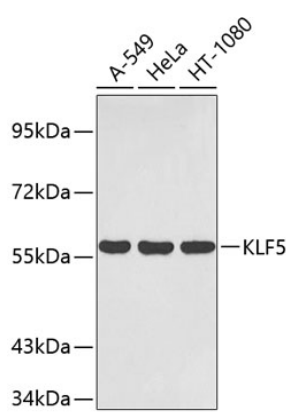
Affinity purification

**Storage**

Store at 4°C. Avoid freeze / thaw cycles.

Buffer: PBS with 0.02% sodium azide,pH7.3.

Validation Data



Western blot analysis of extracts of various cell lines, using KLF5 antibody (A3285).  
Secondary antibody: HRP Goat Anti-Rabbit IgG (H+L) (AS014) at 1:10000 dilution.  
Lysates/proteins: 25µg per lane.  
Blocking buffer: 3% nonfat dry milk in TBST.