

A3278

Leader in Biomolecular Solutions for Life Science



# Map2 Rabbit pAb

Catalog No.: A3278

## Basic Information

### Observed MW

80kDa

### Calculated MW

200kDa

### Category

Polyclonal Antibody

### Applications

WB,ELISA

### Cross-Reactivity

Human,Mouse

## Background

Enables microtubule binding activity. Involved in microtubule cytoskeleton organization; negative regulation of axon extension; and regulation of protein localization. Acts upstream of or within several processes, including establishment of cell polarity; microtubule bundle formation; and neuron projection development. Located in several cellular components, including axon; dendrite; and proximal neuron projection. Is expressed in several structures, including back skin; central nervous system; peripheral nervous system ganglion; retina; and trigeminal nerve. Orthologous to human MAP2 (microtubule associated protein 2).

## Recommended Dilutions

**WB** 1 : 100-1 : 500

**ELISA** Recommended starting concentration is 1 µg/mL. Please optimize the concentration based on your specific assay requirements.

## Immunogen Information

### Gene ID

17756

### Swiss Prot

### Immunogen

A synthetic peptide corresponding to a sequence within amino acids 1-100 of human Map2 (P11137).

### Synonyms

MAP-2; Mtap2; Mtap-2; repro4; G1-397-34; Map2

## Contact

 [www.abclonal.com](http://www.abclonal.com)

## Product Information

### Source

Rabbit

### Isotype

IgG

### Purification

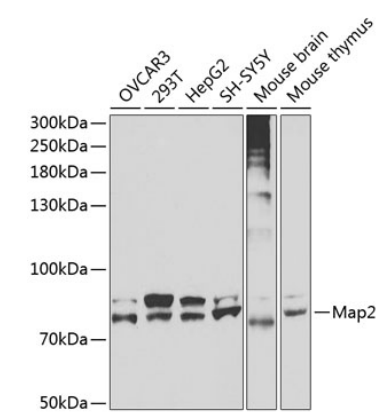
Affinity purification

### Storage

Store at -20°C. Avoid freeze / thaw cycles.

Buffer: PBS with 0.02% sodium azide,50% glycerol,pH7.3.

# Validation Data



Western blot analysis of various lysates using Map2 Rabbit pAb (A3278) at 1:400 dilution.  
Secondary antibody: HRP-conjugated Goat anti-Rabbit IgG (H+L) (AS014) at 1:10000 dilution.  
Lysates/proteins: 25µg per lane.  
Blocking buffer: 3% nonfat dry milk in TBST.  
Detection: ECL Basic Kit (RM00020).  
Exposure time: 30s.