

A3274

Leader in Biomolecular Solutions for Life Science



SMO Rabbit pAb

Catalog No.: A3274 **15 Publications**

Basic Information

Observed MW

86kDa

Calculated MW

86kDa

Category

Polyclonal Antibody

Applications

WB,ELISA

Cross-Reactivity

Human,Mouse

Background

The protein encoded by this gene is a G protein-coupled receptor that interacts with the patched protein, a receptor for hedgehog proteins. The encoded protein transduces signals to other proteins after activation by a hedgehog protein/patched protein complex.

Recommended Dilutions

WB 1:100 - 1:500

ELISA Recommended starting concentration is 1 µg/mL. Please optimize the concentration based on your specific assay requirements.

Immunogen Information

Gene ID

6608

Swiss Prot

Q99835

Immunogen

Recombinant protein (or fragment). This information is considered to be commercially sensitive.

Synonyms

Gx; CRJS; PHLS; SMOH; FZD11; SMO

Contact

 www.abclonal.com

Product Information

Source

Rabbit

Isotype

IgG

Purification

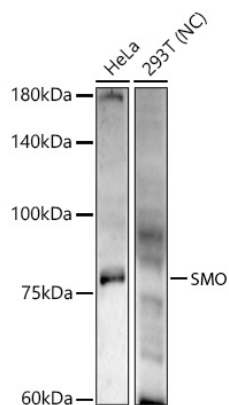
Affinity purification

Storage

Store at -20°C. Avoid freeze / thaw cycles.

Buffer: PBS containing 50% glycerol, preserved with proclin300 or sodium azide (as specified on the Certificate of Analysis), pH 7.3.

Validation Data



Western blot analysis of various lysates using SMO Rabbit pAb (A3274) at 1:500 dilution.

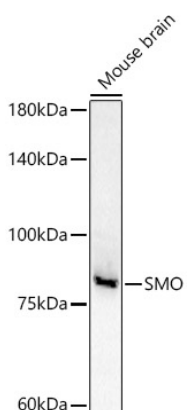
Secondary antibody: HRP-conjugated Goat anti-Rabbit IgG (H+L) (AS014) at 1:10000 dilution.

Lysates/proteins: 25 μ g per lane.

Blocking buffer: 3% nonfat dry milk in TBST.

Detection: ECL Enhanced Kit (RM00021).

Exposure time: 120s.



Western blot analysis of lysates from Mouse brain, using SMO Rabbit pAb (A3274) at 1:500 dilution.

Secondary antibody: HRP-conjugated Goat anti-Rabbit IgG (H+L) (AS014) at 1:10000 dilution.

Lysates/proteins: 25 μ g per lane.

Blocking buffer: 3% nonfat dry milk in TBST.

Detection: ECL Basic Kit (RM00020).

Exposure time: 180s.