

A3213

Leader in Biomolecular Solutions for Life Science



TOMM40 Rabbit pAb

Catalog No.: A3213

2 Publications

Basic Information

Observed MW

38kDa

Calculated MW

38kDa

Category

Polyclonal Antibody

Applications

WB,IHC-P,IF/ICC,ELISA

Cross-Reactivity

Human,Mouse,Rat

Background

The protein encoded by this gene is localized in the outer membrane of the mitochondria. It is the channel-forming subunit of the translocase of the mitochondrial outer membrane (TOM) complex that is essential for import of protein precursors into mitochondria. Alternatively spliced transcript variants have been found for this gene.

Recommended Dilutions

WB 1:500 - 1:2000

IHC-P 1:50 - 1:200

IF/ICC 1:50 - 1:200

ELISA Recommended starting concentration is 1 µg/mL. Please optimize the concentration based on your specific assay requirements.

Immunogen Information

Gene ID

10452

Swiss Prot

O96008

Immunogen

Recombinant fusion protein containing a sequence corresponding to amino acids 1-90 of human TOMM40 (NP_001122389.1).

Synonyms

TOM40; PEREC1; C19orf1; PER-EC1; D19S1177E; TOMM40

Product Information

Source

Rabbit

Isotype

IgG

Purification

Affinity purification

Storage

Store at -20°C. Avoid freeze / thaw cycles.

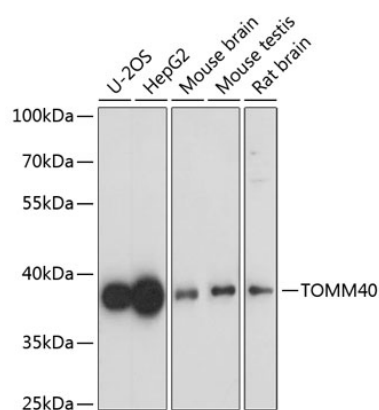
Buffer: PBS with 0.09% Sodium azide,50% glycerol,pH7.3.

Contact



www.abclonal.com

Validation Data



Western blot analysis of various lysates using TOMM40 Rabbit pAb (A3213) at 1:1000 dilution.

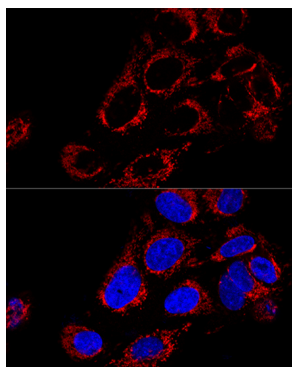
Secondary antibody: HRP-conjugated Goat anti-Rabbit IgG (H+L) (AS014) at 1:10000 dilution.

Lysates/proteins: 25µg per lane.

Blocking buffer: 3% nonfat dry milk in TBST.

Detection: ECL Basic Kit (RM00020).

Exposure time: 60s.



Confocal immunofluorescence analysis of U2OS cells using TOMM40 Rabbit pAb (A3213) at dilution of 1:200. Blue: DAPI for nuclear staining.