

A3192

Leader in Biomolecular Solutions for Life Science



# FAM160B2 Rabbit pAb

Catalog No.: A3192

## Basic Information

### Observed MW

82kDa

### Calculated MW

82kDa

### Category

Polyclonal Antibody

### Applications

WB,ELISA

### Cross-Reactivity

Human,Mouse,Rat

## Background

Able to activate MAPK/ERK and TGFB signaling pathways. May regulate the activity of genes involved in intestinal barrier function and immunoprotective inflammation (By similarity. May play a role in cell proliferation.

## Recommended Dilutions

**WB** 1:500 - 1:2000

**ELISA** Recommended starting concentration is 1 µg/mL. Please optimize the concentration based on your specific assay requirements.

## Immunogen Information

### Gene ID

64760

### Swiss Prot

Q86V87

### Immunogen

Synthetic peptide. This information is considered to be commercially sensitive.

### Synonyms

FAI16; RAI16; FAM160B2; RAM160B2

## Contact

 [www.abclonal.com](http://www.abclonal.com)

## Product Information

### Source

Rabbit

### Isotype

IgG

### Purification

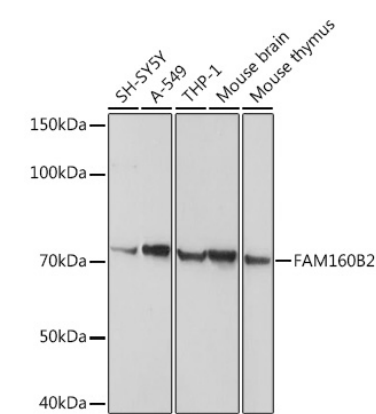
Affinity purification

### Storage

Store at -20°C. Avoid freeze / thaw cycles.

Buffer: PBS with 0.02% sodium azide,50% glycerol,pH7.3.

Validation Data



Western blot analysis of various lysates using FAM160B2 Rabbit pAb (A3192) at 1:1000 dilution.  
Secondary antibody: HRP-conjugated Goat anti-Rabbit IgG (H+L) (AS014) at 1:10000 dilution.  
Lysates/proteins: 25µg per lane.  
Blocking buffer: 3% nonfat dry milk in TBST.  
Detection: ECL Basic Kit (RM00020).  
Exposure time: 10s.