

A3191

Leader in Biomolecular Solutions for Life Science



# ABCA6 Rabbit pAb

Catalog No.: A3191

1 Publications

## Basic Information

### Observed MW

185kDa

### Calculated MW

44kDa/183kDa

### Category

Polyclonal Antibody

### Applications

WB,IF/ICC,ELISA

### Cross-Reactivity

Human,Mouse,Rat

## Background

Predicted to enable ATPase-coupled transmembrane transporter activity and lipid transporter activity. Predicted to be involved in lipid transport. Predicted to be located in Golgi membrane; nucleoplasm; and plasma membrane. Predicted to be active in intracellular membrane-bounded organelle. Is expressed in tail. Orthologous to human ABCA6 (ATP binding cassette subfamily A member 6).

## Recommended Dilutions

**WB** 1:500 - 1:1000

**IF/ICC** 1:50 - 1:200

**ELISA** Recommended starting concentration is 1 µg/mL. Please optimize the concentration based on your specific assay requirements.

## Immunogen Information

### Gene ID

76184

### Swiss Prot

### Immunogen

Recombinant protein (or fragment). This information is considered to be commercially sensitive.

### Synonyms

6330565N06Rik; ABCA6

## Contact

 [www.abclonal.com](http://www.abclonal.com)

## Product Information

### Source

Rabbit

### Isotype

IgG

### Purification

Affinity purification

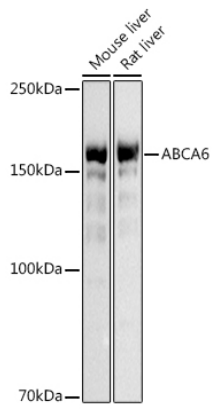
### Storage

Store at -20°C. Avoid freeze / thaw cycles.

Buffer: PBS containing 50% glycerol, preserved with proclin300 or sodium azide (as specified on the Certificate of Analysis), pH 7.3.

## Validation Data

---



Western blot analysis of various lysates using (A3191) at 1:500 dilution.

Secondary antibody: HRP-conjugated Goat anti-Rabbit IgG (H+L) (AS014) at 1:10000 dilution.

Lysates/proteins: 25µg per lane.

Blocking buffer: 3% nonfat dry milk in TBST.

Detection: ECL Basic Kit (RM00020).

Exposure time: 3s.