

A3184

Leader in Biomolecular Solutions for Life Science



## SLC22A6 Rabbit pAb

Catalog No.: A3184 **2 Publications**

### Basic Information

**Observed MW**

60kDa

**Calculated MW**

62kDa

**Category**

Polyclonal Antibody

**Applications**

WB,ELISA

**Cross-Reactivity**

Human,Mouse

### Background

The protein encoded by this gene is involved in the sodium-dependent transport and excretion of organic anions, some of which are potentially toxic. The encoded protein is an integral membrane protein and may be localized to the basolateral membrane. Four transcript variants encoding four different isoforms have been found for this gene.

### Recommended Dilutions

**WB** 1:500 - 1:2000

**ELISA** Recommended starting concentration is 1 µg/mL. Please optimize the concentration based on your specific assay requirements.

### Immunogen Information

**Gene ID**

9356

**Swiss Prot**

Q4U2R8

**Immunogen**

A synthetic peptide corresponding to a sequence within amino acids 500-600 of human SLC22A6 (Q4U2R8).

**Synonyms**

OAT1; PAHT; HOAT1; ROAT1; SLC22A6

### Contact



[www.abclonal.com](http://www.abclonal.com)

### Product Information

**Source**

Rabbit

**Isotype**

IgG

**Purification**

Affinity purification

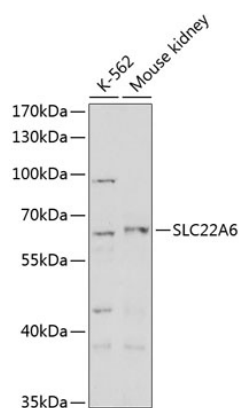
**Storage**

Store at -20°C. Avoid freeze / thaw cycles.

Buffer: PBS with 0.02% sodium azide, 50% glycerol, pH7.3.

## Validation Data

---



Western blot analysis of various lysates using SLC22A6 Rabbit pAb (A3184) at 1:500 dilution.

Secondary antibody: HRP-conjugated Goat anti-Rabbit IgG (H+L) (AS014) at 1:10000 dilution.

Lysates/proteins: 25µg per lane.

Blocking buffer: 3% nonfat dry milk in TBST.