

A3160

Leader in Biomolecular Solutions for Life Science



## AIF1/IBA1 Rabbit pAb

Catalog No.: A3160

1 Publications

### Basic Information

#### Observed MW

Refer to figures

#### Calculated MW

17kDa

#### Category

Polyclonal Antibody

#### Applications

IHC-P,IF/ICC,ELISA

#### Cross-Reactivity

Human,Mouse,Rat

### Background

This gene encodes a protein that binds actin and calcium. This gene is induced by cytokines and interferon and may promote macrophage activation and growth of vascular smooth muscle cells and T-lymphocytes. Polymorphisms in this gene may be associated with systemic sclerosis. Alternative splicing results in multiple transcript variants, but the full-length and coding nature of some of these variants is not certain.

### Recommended Dilutions

IHC-P 1:50 - 1:200

IF/ICC 1:50 - 1:200

### Immunogen Information

#### Gene ID

199

#### Swiss Prot

P55008

#### Immunogen

Recombinant fusion protein containing a sequence corresponding to amino acids 1-147 of human AIF1/IBA1 (P55008).

#### Synonyms

IBA1; IRT1; AIF-1; IRT-1; AIF1/IBA1

### Contact



[www.abclonal.com](http://www.abclonal.com)

### Product Information

#### Source

Rabbit

#### Isotype

IgG

#### Purification

Affinity purification

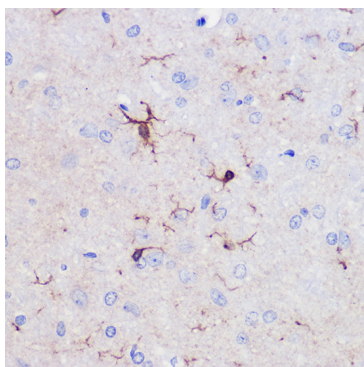
#### Storage

Store at -20°C. Avoid freeze / thaw cycles.

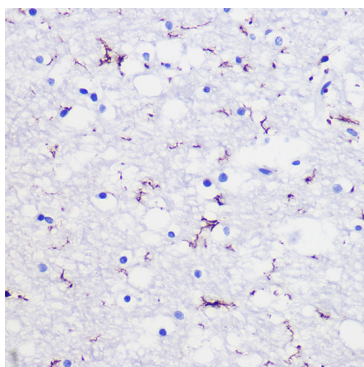
Buffer: PBS with 0.01% thimerosal, 50% glycerol, pH7.3.

## Validation Data

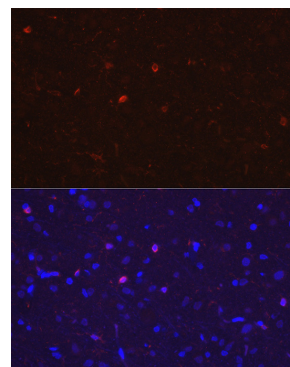
---



Immunohistochemistry analysis of paraffin-embedded Rat brain using AIF1/IBA1 Rabbit pAb (A3160) at dilution of 1:50 (40x lens). Microwave antigen retrieval performed with 0.01M PBS Buffer (pH 7.2) prior to IHC staining.



Immunohistochemistry analysis of paraffin-embedded Human brain using AIF1/IBA1 Rabbit pAb (A3160) at dilution of 1:50 (40x lens). Microwave antigen retrieval performed with 0.01M PBS Buffer (pH 7.2) prior to IHC staining.



Immunofluorescence analysis of paraffin-embedded rat brain using AIF1/IBA1 Rabbit pAb (A3160) at dilution of 1:20 (40x lens). Secondary antibody: Cy3-conjugated Goat anti-Rabbit IgG (H+L) (AS007) at 1:500 dilution. Blue: DAPI for nuclear staining.