

A3122

Leader in Biomolecular Solutions for Life Science



## PP2A Catalytic $\beta$ Rabbit pAb

Catalog No.: A3122

1 Publications

### Basic Information

#### Observed MW

36kDa

#### Calculated MW

36kDa

#### Category

Polyclonal Antibody

#### Applications

WB,IHC-P,IF/ICC,ELISA

#### Cross-Reactivity

Human,Mouse,Rat

### Background

This gene encodes the phosphatase 2A catalytic subunit. Protein phosphatase 2A is one of the four major Ser/Thr phosphatases, and it is implicated in the negative control of cell growth and division. It consists of a common heteromeric core enzyme, which is composed of a catalytic subunit and a constant regulatory subunit, that associates with a variety of regulatory subunits. This gene encodes a beta isoform of the catalytic subunit.

### Recommended Dilutions

**WB** 1:500 - 1:2000

**IHC-P** 1:100 - 1:200

**IF/ICC** 1:50 - 1:200

**ELISA** Recommended starting concentration is 1  $\mu$ g/mL. Please optimize the concentration based on your specific assay requirements.

### Immunogen Information

#### Gene ID

5516

#### Swiss Prot

P62714

#### Immunogen

Recombinant fusion protein containing a sequence corresponding to amino acids 1-309 of human PP2A Catalytic  $\beta$  (NP\_001009552.1).

#### Synonyms

PP2CB; PP2Abeta; PP2A Catalytic  $\beta$

### Product Information

#### Source

Rabbit

#### Isotype

IgG

#### Purification

Affinity purification

#### Storage

Store at  $-20^{\circ}\text{C}$ . Avoid freeze / thaw cycles.

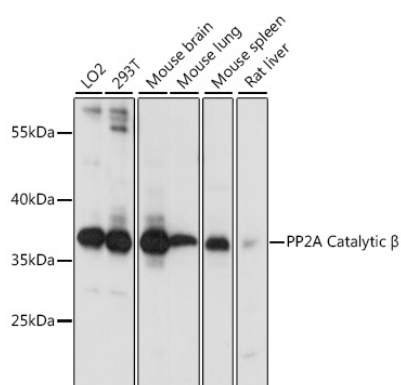
Buffer: PBS with 0.09% Sodium azide, 50% glycerol, pH7.3.

### Contact



[www.abclonal.com](http://www.abclonal.com)

## Validation Data



Western blot analysis of various lysates using PP2A Catalytic  $\beta$  Rabbit pAb (A3122) at 1:1000 dilution.

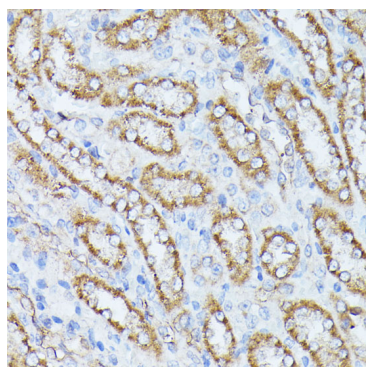
Secondary antibody: HRP-conjugated Goat anti-Rabbit IgG (H+L) (AS014) at 1:10000 dilution.

Lysates/proteins: 25 $\mu$ g per lane.

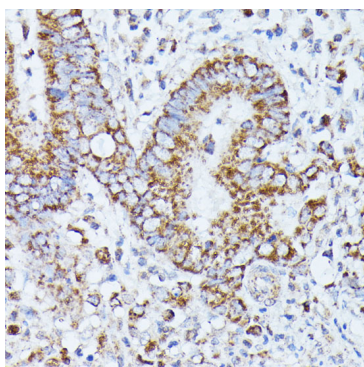
Blocking buffer: 3% nonfat dry milk in TBST.

Detection: ECL Basic Kit (RM00020).

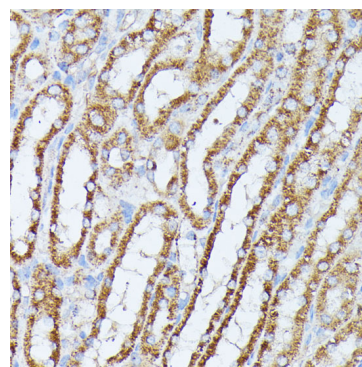
Exposure time: 30s.



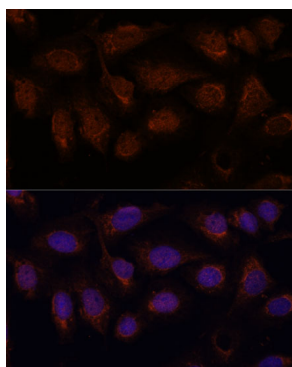
Immunohistochemistry analysis of paraffin-embedded Rat kidney using PP2A Catalytic  $\beta$  Rabbit pAb (A3122) at dilution of 1:100 (40x lens). Microwave antigen retrieval performed with 0.01M PBS Buffer (pH 7.2) prior to IHC staining.



Immunohistochemistry analysis of paraffin-embedded Human colon carcinoma using PP2A Catalytic  $\beta$  Rabbit pAb (A3122) at dilution of 1:100 (40x lens). Microwave antigen retrieval performed with 0.01M PBS Buffer (pH 7.2) prior to IHC staining.



Immunohistochemistry analysis of paraffin-embedded Mouse kidney using PP2A Catalytic  $\beta$  Rabbit pAb (A3122) at dilution of 1:100 (40x lens). Microwave antigen retrieval performed with 0.01M PBS Buffer (pH 7.2) prior to IHC staining.



Immunofluorescence analysis of U-2 OS cells using PP2A Catalytic  $\beta$  Rabbit pAb (A3122) at dilution of 1:100. Secondary antibody: Cy3-conjugated Goat anti-Rabbit IgG (H+L) (AS007) at 1:500 dilution. Blue: DAPI for nuclear staining.