

A3042

Leader in Biomolecular Solutions for Life Science



CHRNA10 Rabbit pAb

Catalog No.: A3042

Basic Information

Observed MW

45kDa

Calculated MW

50kDa

Category

Polyclonal Antibody

Applications

WB,ELISA

Cross-Reactivity

Human

Background

Predicted to enable acetylcholine-gated cation-selective channel activity. Acts upstream of or within positive regulation of cytosolic calcium ion concentration. Predicted to be located in membrane. Predicted to be active in cholinergic synapse and neuron projection. Predicted to be integral component of postsynaptic specialization membrane.

Recommended Dilutions

WB 1:200 - 1:1000

ELISA Recommended starting concentration is 1 µg/mL. Please optimize the concentration based on your specific assay requirements.

Immunogen Information

Gene ID

57053

Swiss Prot

Q9GZZ6

Immunogen

Recombinant protein (or fragment). This information is considered to be commercially sensitive.

Synonyms

CHRNA10

Contact



www.abclonal.com

Product Information

Source

Rabbit

Isotype

IgG

Purification

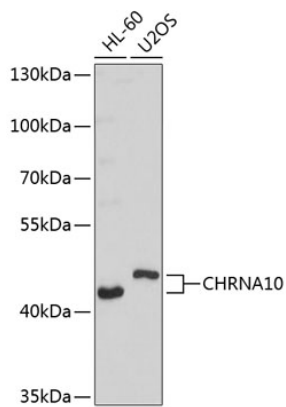
Affinity purification

Storage

Store at -20°C. Avoid freeze / thaw cycles.

Buffer: PBS with 0.02% sodium azide, 50% glycerol, pH7.3.

Validation Data



Western blot analysis of various lysates using CHRNA10 Rabbit pAb (A3042) at 1:1000 dilution.

Secondary antibody: HRP-conjugated Goat anti-Rabbit IgG (H+L) (AS014) at 1:10000 dilution.

Lysates/proteins: 25µg per lane.

Blocking buffer: 3% nonfat dry milk in TBST.

Detection: ECL Basic Kit (RM00020).

Exposure time: 20s.