

A3013SP

Leader in Biomolecular Solutions for Life Science



# MCT1/SLC16A1 Rabbit pAb

Catalog No.: A3013SP **11 Publications**

## Basic Information

### Observed MW

43 kDa

### Calculated MW

54 kDa/53 kDa/46 kDa

### Category

Polyclonal Antibody

### Applications

WB,IHC-P,IF/ICC,ELISA,IF-P

### Cross-Reactivity

Human,Mouse

## Background

The protein encoded by this gene is a proton-linked monocarboxylate transporter that catalyzes the movement of many monocarboxylates, such as lactate and pyruvate, across the plasma membrane. Mutations in this gene are associated with erythrocyte lactate transporter defect. Alternatively spliced transcript variants have been found for this gene.

## Recommended Dilutions

<b>WB</b>	1:2000 - 1:5000
<b>IF/ICC</b>	1:200 - 1:400
<b>IF-P</b>	1:200 - 1:400
<b>IHC-P</b>	1:200 - 1:800
<b>ELISA</b>	Recommended starting concentration is 1 µg/mL. Please optimize the concentration based on your specific assay requirements. For high-ratio antibody dilutions (≥1:10000)

## Immunogen Information

### Gene ID

6566/20501

### Swiss Prot

P53985/P53986

### Immunogen

This information is considered to be commercially sensitive.

### Synonyms

MCT; HHF7; MCT1; MCT1D; MCT1/SLC16A1

## Product Information

### Source

Rabbit

### Isotype

IgG

### Purification

Affinity purification

### Storage

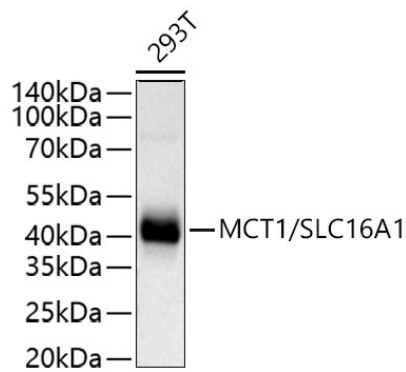
Store at -20°C. Avoid freeze / thaw cycles.

Buffer: PBS, pH 7.3, containing 50% glycerol. Preserved with Proclin300 or sodium azide. May contain 0.05% BSA as specified on the Certificate of Analysis.

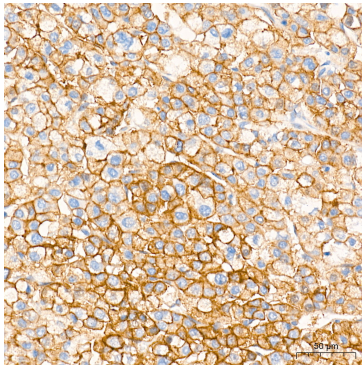
## Contact

 [www.abclonal.com](http://www.abclonal.com)

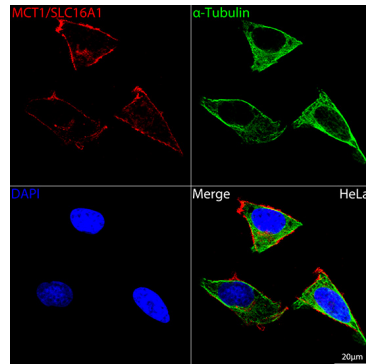
## Validation Data



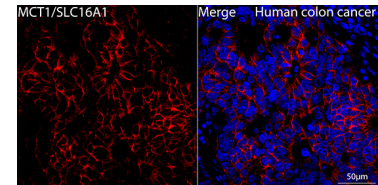
Western blot analysis of lysates from 293T cells using MCT1/SLC16A1 Rabbit pAb (A3013SP) at 1:2000 dilution incubated overnight at 4°C.  
Secondary antibody: HRP-conjugated Goat anti-Rabbit IgG (H+L) (AS014) at 1:10000 dilution.  
Lysates/proteins: 25 µg per lane.  
Blocking buffer: 3% nonfat dry milk in TBST.  
Detection: ECL Basic Kit (RM00020).  
Exposure time: 10 s.



Immunohistochemistry analysis of paraffin-embedded Human liver cancer tissue using MCT1/SLC16A1 Rabbit pAb (A3013SP) at a dilution of 1:600 (40x lens). High pressure antigen retrieval performed with 0.01M Tris-EDTA Buffer (pH 9.0) prior to IHC staining.



Confocal imaging of HeLa cells using MCT1/SLC16A1 Rabbit pAb (A3013SP, dilution 1:200) followed by a further incubation with Cy3-conjugated Goat anti-Rabbit IgG (H+L) (AS007, dilution 1:500) (Red). The cells were counterstained with α-Tubulin Mouse mAb (AC012, dilution 1:400) followed by incubation with ABflo® 488-conjugated Goat Anti-Mouse IgG (H+L) Ab (AS076, dilution 1:500) (Green). DAPI was used for nuclear staining (Blue). Objective: 100x.



Confocal imaging of paraffin-embedded Human colon cancer using MCT1/SLC16A1 Rabbit pAb (A3013SP, dilution 1:200) followed by a further incubation with Cy3-conjugated Goat anti-Rabbit IgG (H+L) (AS007, dilution 1:500) (Red). DAPI was used for nuclear staining (Blue). High pressure antigen retrieval performed with 0.01M Citrate Buffer (pH 6.0) prior to IF staining. Objective: 40x.