

A2984

Leader in Biomolecular Solutions for Life Science



# CD25 Rabbit pAb

Catalog No.: A2984 **1 Publications**

## Basic Information

### Observed MW

60kDa

### Calculated MW

31kDa

### Category

Polyclonal Antibody

### Applications

WB,IHC-P,IF/ICC,FC,ELISA

### Cross-Reactivity

Human,Mouse,Rat

## Background

The interleukin 2 (IL2) receptor alpha (IL2RA) and beta (IL2RB) chains, together with the common gamma chain (IL2RG), constitute the high-affinity IL2 receptor. Homodimeric alpha chains (IL2RA) result in low-affinity receptor, while homodimeric beta (IL2RB) chains produce a medium-affinity receptor. Normally an integral-membrane protein, soluble IL2RA has been isolated and determined to result from extracellular proteolysis. Alternately-spliced IL2RA mRNAs have been isolated, but the significance of each is presently unknown. Mutations in this gene are associated with interleukin 2 receptor alpha deficiency. Patients with severe Coronavirus Disease 2019 (COVID-19), the disease caused by the novel severe acute respiratory syndrome coronavirus 2 (SARS-CoV-2), have significantly elevated levels of IL2R in their plasma. Similarly, serum IL-2R levels are found to be elevated in patients with different types of carcinomas. Certain IL2RA and IL2RB gene polymorphisms have been associated with lung cancer risk.

## Recommended Dilutions

<b>WB</b>	1:500 - 1:1000
<b>IHC-P</b>	1:50 - 1:200
<b>IF/ICC</b>	1:50 - 1:200
<b>FC</b>	1:50 - 1:200
<b>ELISA</b>	Recommended starting concentration is 1 µg/mL. Please optimize the concentration based on your specific assay requirements.

## Contact

 [www.abclonal.com](http://www.abclonal.com)

## Immunogen Information

<b>Gene ID</b>	<b>Swiss Prot</b>
3559	P01589

### Immunogen

A synthetic peptide corresponding to a sequence within amino acids 101-200 of human CD25 (NP\_000408.1).

### Synonyms

p55; CD25; IL2R; IMD41; TCGFR; IDDM10

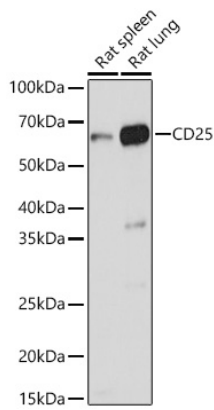
## Product Information

<b>Source</b>	<b>Isotype</b>	<b>Purification</b>
Rabbit	IgG	Affinity purification

### Storage

Store at -20°C. Avoid freeze / thaw cycles.  
Buffer: PBS with 0.05% proclin300,50% glycerol,pH7.3.

## Validation Data



Western blot analysis of various lysates using CD25 Rabbit pAb (A2984) at 1:1000 dilution.

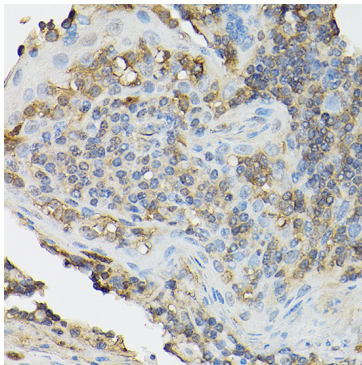
Secondary antibody: HRP-conjugated Goat anti-Rabbit IgG (H+L) (AS014) at 1:10000 dilution.

Lysates/proteins: 25µg per lane.

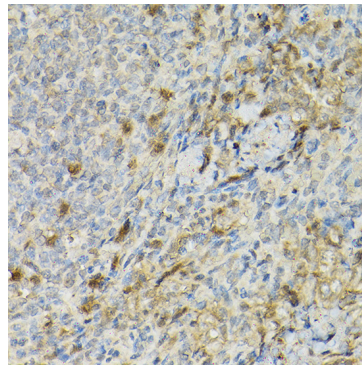
Blocking buffer: 3% nonfat dry milk in TBST.

Detection: ECL Basic Kit (RM00020).

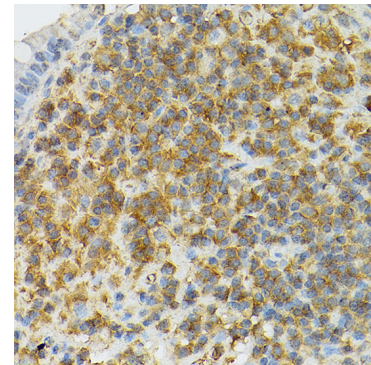
Exposure time: 3s.



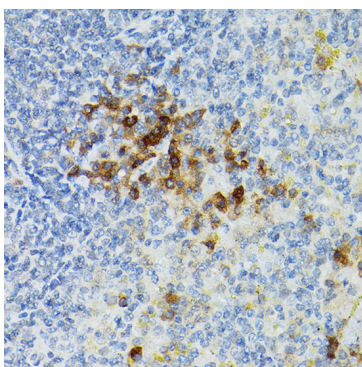
Immunohistochemistry analysis of paraffin-embedded Human tonsil using CD25 Rabbit pAb (A2984) at dilution of 1:100 (40x lens). High pressure antigen retrieval performed with 0.01M Citrate Bufferr (pH 6.0) prior to IHC staining.



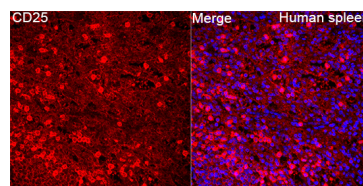
Immunohistochemistry analysis of paraffin-embedded Rat spleen using CD25 Rabbit pAb (A2984) at dilution of 1:100 (40x lens). High pressure antigen retrieval performed with 0.01M Citrate Bufferr (pH 6.0) prior to IHC staining.



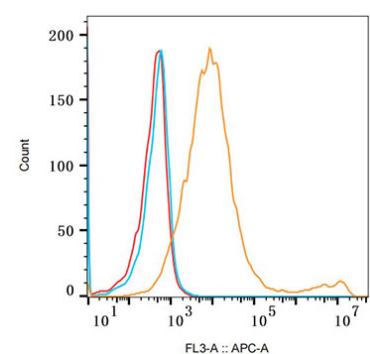
Immunohistochemistry analysis of paraffin-embedded Human gastric cancer tissue using CD25 Rabbit pAb (A2984) at a dilution of 1:25 (40x lens). High pressure antigen retrieval was performed with 0.01 M citrate buffer (pH 6.0) prior to IHC staining.



Immunohistochemistry analysis of paraffin-embedded Mouse spleen tissue using CD25 Rabbit pAb (A2984) at a dilution of 1:25 (40x lens). High pressure antigen retrieval was performed with 0.01 M citrate buffer (pH 6.0) prior to IHC staining.



Immunofluorescence analysis of paraffin-embedded Human spleen tissue using CD25 Rabbit pAb (A2984) at a dilution of 1:200 (40x lens). Secondary antibody: Cy3-conjugated Goat anti-Rabbit IgG (H+L) (AS007) at 1:500 dilution. Blue: DAPI for nuclear staining. Perform high pressure antigen retrieval with 0.01 M citrate buffer (pH 6.0) prior to IF staining.



Flow cytometry: 293F Transfection cells(+) and 293F cells(-) were stained with Rabbit IgG isotype control (AC042, 10 µg/mL, blue line) or CD25 Rabbit pAb (A2984, 2.5µg/mL orange line), followed by Goat anti-Rabbit pAb Alexa Fluor 647 (AS086, 1:600 dilution) staining. Non-fluorescently stained Daudi cells was used as blank control (red line).