

A2904

Leader in Biomolecular Solutions for Life Science



SLC1A6 Rabbit pAb

Catalog No.: A2904

Basic Information

Observed MW

64kDa

Calculated MW

62kDa

Category

Polyclonal Antibody

Applications

WB,ELISA

Cross-Reactivity

Human,Mouse

Background

Predicted to enable high-affinity glutamate transmembrane transporter activity. Involved in neurotransmitter uptake. Located in intermediate filament cytoskeleton and plasma membrane.

Recommended Dilutions

WB 1:500 - 1:1000

ELISA Recommended starting concentration is 1 µg/mL. Please optimize the concentration based on your specific assay requirements.

Immunogen Information

Gene ID

6511

Swiss Prot

P48664

Immunogen

Recombinant protein (or fragment). This information is considered to be commercially sensitive.

Synonyms

EAAT4; SLC1A6

Contact

 www.abclonal.com

Product Information

Source

Rabbit

Isotype

IgG

Purification

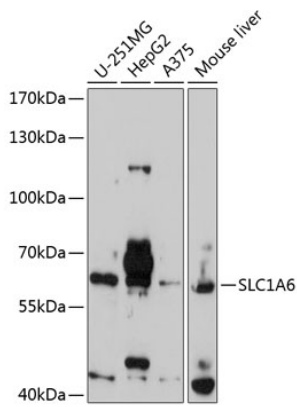
Affinity purification

Storage

Store at -20°C. Avoid freeze / thaw cycles.

Buffer: PBS containing 50% glycerol, preserved with proclin300 or sodium azide (as specified on the Certificate of Analysis), pH 7.3.

Validation Data



Western blot analysis of various lysates using SLC1A6 Rabbit pAb (A2904) at 1:1000 dilution.
Secondary antibody: HRP-conjugated Goat anti-Rabbit IgG (H+L) (AS014) at 1:10000 dilution.
Lysates/proteins: 25µg per lane.
Blocking buffer: 3% nonfat dry milk in TBST.
Detection: ECL Basic Kit (RM00020).
Exposure time: 90s.