

A28527

Leader in Biomolecular Solutions for Life Science



YKL-40/CHI3L1 Rabbit mAb

Catalog No.: A28527 **Recombinant**

Basic Information

Observed MW

40 kDa

Calculated MW

43 kDa/44 kDa

Category

Monoclonal Antibody

Applications

WB,IHC-P,IP,ELISA

Cross-Reactivity

Mouse

Background

Predicted to enable chitin binding activity. Involved in positive regulation of macromolecule metabolic process and positive regulation of phosphatidylinositol 3-kinase/protein kinase B signal transduction. Located in endoplasmic reticulum. Is expressed in several structures, including alimentary system; genitourinary system; limb; liver; and skeleton. Human ortholog(s) of this gene implicated in asthma and schizophrenia. Orthologous to human CHI3L1 (chitinase 3 like 1).

Recommended Dilutions

WB 1:3000 - 1:10000

IP 0.5 µg-4 µg antibody
for 400 µg-600 µg
extracts of whole cells

IHC-P 1:100 - 1:400

ELISA Recommended starting
concentration is 1
µg/mL. Please optimize
the concentration
based on your specific
assay requirements. For
high-ratio antibody
dilutions (≥1:10000)

Immunogen Information

Gene ID

12654

Swiss Prot

Q61362

Immunogen

Recombinant protein (or fragment). This information is considered to be commercially sensitive.

Synonyms

Gp39; Brp39; Chil1

Product Information

Source

Rabbit

Isotype

IgG

Purification

Affinity purification

Storage

Store at -20°C. Avoid freeze / thaw cycles.

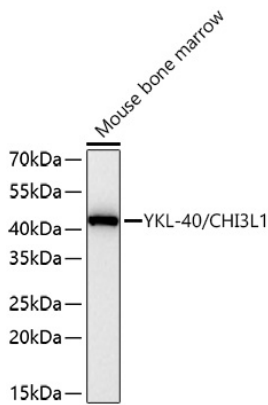
Buffer: PBS with 0.09% Sodium azide,0.05% BSA,50% glycerol,pH7.3.

Contact



www.abclonal.com

Validation Data



Western blot analysis of lysates from Mouse bone marrow using YKL-40/CHI3L1 Rabbit mAb (A28527) at 1:5000 dilution incubated overnight at 4°C.

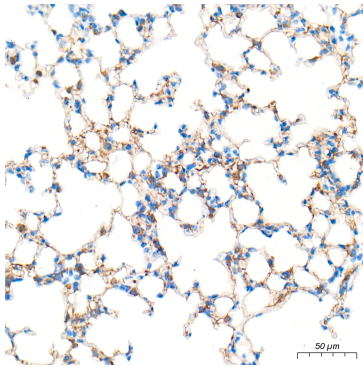
Secondary antibody: HRP-conjugated Goat anti-Rabbit IgG (H+L) (AS014) at 1:10000 dilution.

Lysates/proteins: 25 µg per lane.

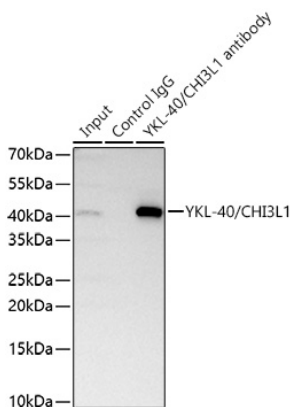
Blocking buffer: 3% nonfat dry milk in TBST.

Detection: ECL Basic Kit (RM00020).

Exposure time: 45 s.



Immunohistochemistry analysis of paraffin-embedded Mouse lung tissue using YKL-40/CHI3L1 Rabbit mAb (A28527) at a dilution of 1:200 (40x lens). High pressure antigen retrieval performed with 0.01M Tris-EDTA Buffer (pH 9.0) prior to IHC staining.



Immunoprecipitation of YKL-40/CHI3L1 from 600 µg extracts of Mouse lung tissue was performed using 2 µg of YKL-40/CHI3L1 Rabbit mAb (A28527). Rabbit Control IgG (AC005) was used to precipitate the Control IgG sample. IP samples were eluted with 1x Laemmli Buffer. The Input lane represents 10% of the total input. Western blot analysis of immunoprecipitates was conducted using YKL-40/CHI3L1 Rabbit mAb (A28527) at a dilution of 1:5000.