

A28513

Leader in Biomolecular Solutions for Life Science



KLF4 Rabbit pAb

Catalog No.: A28513

Basic Information

Observed MW

50-65 kDa

Calculated MW

52 kDa

Category

Polyclonal Antibody

Applications

WB,IHC-P,ELISA

Cross-Reactivity

Human,Mouse,Rat

Background

Enables several functions, including DNA binding activity; DNA-binding transcription activator activity, RNA polymerase II-specific; and RNA polymerase II sequence-specific DNA-binding transcription factor recruiting activity. Involved in several processes, including canonical Wnt signaling pathway; establishment of skin barrier; and fat cell differentiation. Acts upstream of or within several processes, including cellular response to leukemia inhibitory factor; regulation of DNA-templated transcription; and regulation of blastocyst development. Located in cytoplasm; euchromatin; and nucleus. Part of transcription regulator complex. Is expressed in several structures, including alimentary system; early conceptus; genitourinary system; limb; and skin. Human ortholog(s) of this gene implicated in hepatocellular carcinoma. Orthologous to human KLF4 (KLF transcription factor 4).

Recommended Dilutions

WB 1:1000 - 1:6000

IHC-P 1:400 - 1:1600

ELISA Recommended starting concentration is 1 µg/mL. Please optimize the concentration based on your specific assay requirements. For high-ratio antibody dilutions (≥1:10000)

Immunogen Information

Gene ID

16600

Swiss Prot

Q60793

Immunogen

Recombinant protein (or fragment). This information is considered to be commercially sensitive.

Synonyms

EZF; Zie; Gklf

Product Information

Source

Rabbit

Isotype

IgG

Purification

Affinity purification

Storage

Store at -20°C. Avoid freeze / thaw cycles.

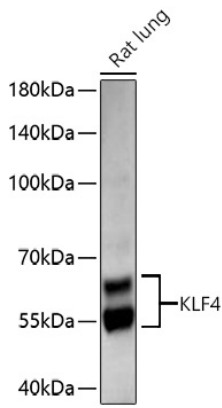
Buffer: PBS with 0.09% Sodium azide, 50% glycerol, pH7.3.

Contact

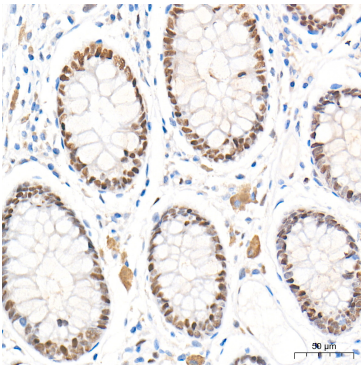


www.abclonal.com

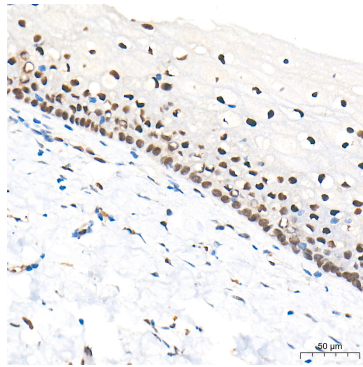
Validation Data



Western blot analysis of lysates from Rat lung using KLF4 Rabbit pAb (A28513) at 1:3000 dilution incubated at room temperature for 1.5 hours.
Secondary antibody: HRP-conjugated Goat anti-Rabbit IgG (H+L) (AS014) at 1:10000 dilution.
Lysates/proteins: 25 µg per lane.
Blocking buffer: 3% nonfat dry milk in TBST.
Detection: ECL Basic Kit (RM00020).
Exposure time: 90 s.



Immunohistochemistry analysis of paraffin-embedded Human colon tissue using KLF4 Rabbit pAb (A28513) at a dilution of 1:800 (40x lens). High pressure antigen retrieval performed with 0.01M Tris-EDTA Buffer (pH 9.0) prior to IHC staining.



Immunohistochemistry analysis of paraffin-embedded Human esophagus tissue using KLF4 Rabbit pAb (A28513) at a dilution of 1:800 (40x lens). High pressure antigen retrieval performed with 0.01M Tris-EDTA Buffer (pH 9.0) prior to IHC staining.