

A2846

Leader in Biomolecular Solutions for Life Science



PUMA Rabbit pAb

Catalog No.: A2846

1 Publications

Basic Information

Observed MW

23kDa

Calculated MW

10kDa/14kDa/20kDa/26kDa

Category

Polyclonal Antibody

Applications

WB

Cross-Reactivity

Human,Mouse,Rat

Background

This gene encodes a member of the BCL-2 family of proteins. This family member belongs to the BH3-only pro-apoptotic subclass. The protein cooperates with direct activator proteins to induce mitochondrial outer membrane permeabilization and apoptosis. It can bind to anti-apoptotic Bcl-2 family members to induce mitochondrial dysfunction and caspase activation. Because of its pro-apoptotic role, this gene is a potential drug target for cancer therapy and for tissue injury. Alternative splicing results in multiple transcript variants.

Recommended Dilutions

WB

1:500 - 1:2000

Immunogen Information

Gene ID

27113

Swiss Prot

Q96PG8/Q9BXH1

Immunogen

Recombinant protein (or fragment). This information is considered to be commercially sensitive.

Synonyms

JFY1; PUMA; JFY-1

Contact



www.abclonal.com

Product Information

Source

Rabbit

Isotype

IgG

Purification

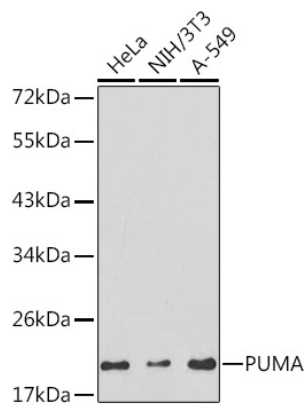
Affinity purification

Storage

Store at -20°C. Avoid freeze / thaw cycles.

Buffer: PBS with 0.02% sodium azide, 50% glycerol, pH7.3.

Validation Data



Western blot analysis of various lysates using PUMA Rabbit pAb (A2846).
Secondary antibody: HRP-conjugated Goat anti-Rabbit IgG (H+L) (AS014) at 1:10000 dilution.
Lysates/proteins: 25µg per lane.
Blocking buffer: 3% nonfat dry milk in TBST.