

A28349

Leader in Biomolecular Solutions for Life Science



Cleaved-Caspase 3 p12 Rabbit mAb

Catalog No.: A28349 **Recombinant**

Basic Information

Observed MW

12 kDa

Calculated MW

32 kDa

Category

Monoclonal Antibody

Applications

WB,ELISA

Cross-Reactivity

Human

Background

The protein encoded by this gene is a cysteine-aspartic acid protease that plays a central role in the execution-phase of cell apoptosis. The encoded protein cleaves and inactivates poly(ADP-ribose) polymerase while it cleaves and activates sterol regulatory element binding proteins as well as caspases 6, 7, and 9. This protein itself is processed by caspases 8, 9, and 10. It is the predominant caspase involved in the cleavage of amyloid-beta 4A precursor protein, which is associated with neuronal death in Alzheimer's disease.

Recommended Dilutions

WB 1:2000 - 1:10000

ELISA Recommended starting concentration is 1 µg/mL. Please optimize the concentration based on your specific assay requirements. For high-ratio antibody dilutions ($\geq 1:10000$), a sequential dilution method is strongly recommended to ensure measurement accuracy.

Immunogen Information

Gene ID

836

Swiss Prot

P42574

Immunogen

Synthetic peptide. This information is considered to be commercially sensitive.

Synonyms

CPP32; SCA-1; CPP32B

Product Information

Source

Rabbit

Isotype

IgG

Purification

Affinity purification

Storage

Store at -20°C. Avoid freeze / thaw cycles.

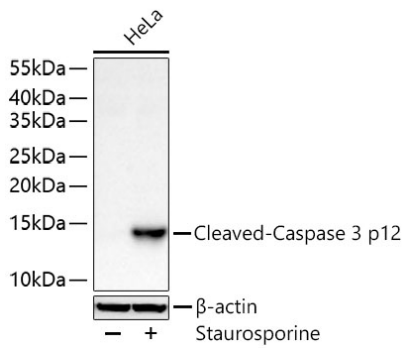
Buffer: PBS with 0.09% Sodium azide,0.05% BSA,50% glycerol,pH7.3.

Contact



www.abclonal.com

Validation Data



Western blot analysis of lysates from HeLa cells using Cleaved-Caspase 3 p12 Rabbit mAb (A28349) at 1:5000 dilution incubated overnight at 4°C. HeLa cells were treated with Staurosporine (3 μ M) for 3 hours.

Secondary antibody: HRP-conjugated Goat anti-Rabbit IgG (H+L) (AS014) at 1:10000 dilution.

Lysates/proteins: 30 μ g per lane.

Blocking buffer: 3% nonfat dry milk in TBST.

Detection: ECL Basic Kit (RM00020).

Exposure time: 60 s.