

A2814

Leader in Biomolecular Solutions for Life Science



# GPT Rabbit pAb

Catalog No.: A2814 **1 Publications**

## Basic Information

### Observed MW

55kDa

### Calculated MW

55kDa

### Category

Polyclonal Antibody

### Applications

WB,ELISA

### Cross-Reactivity

Human,Mouse,Rat

## Background

This gene encodes cytosolic alanine aminotransferase 1 (ALT1); also known as glutamate-pyruvate transaminase 1. This enzyme catalyzes the reversible transamination between alanine and 2-oxoglutarate to generate pyruvate and glutamate and, therefore, plays a key role in the intermediary metabolism of glucose and amino acids. Serum activity levels of this enzyme are routinely used as a biomarker of liver injury caused by drug toxicity, infection, alcohol, and steatosis. A related gene on chromosome 16 encodes a putative mitochondrial alanine aminotransferase.

## Recommended Dilutions

WB 1:200 - 1:1000

## Immunogen Information

### Gene ID

2875

### Swiss Prot

P24298

### Immunogen

Recombinant fusion protein containing a sequence corresponding to amino acids 1-190 of human GPT (NP\_005300.1).

### Synonyms

ALT; AAT1; ALT1; GPT1; SGPT; GPT

## Contact

 [www.abclonal.com](http://www.abclonal.com)

## Product Information

### Source

Rabbit

### Isotype

IgG

### Purification

Affinity purification

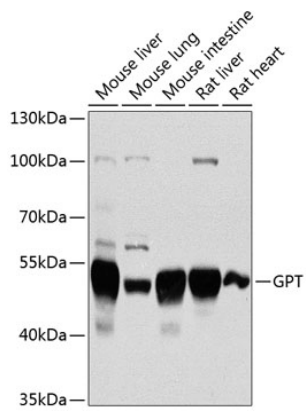
### Storage

Store at -20°C. Avoid freeze / thaw cycles.

Buffer: PBS with 0.02% sodium azide,50% glycerol,pH7.3.

## Validation Data

---



Western blot analysis of extracts of various cell lines, using GPT antibody (A2814) at 1:1000 dilution.

Secondary antibody: HRP Goat Anti-Rabbit IgG (H+L) (AS014) at 1:10000 dilution.

Lysates/proteins: 25µg per lane.

Blocking buffer: 3% nonfat dry milk in TBST.

Detection: ECL Basic Kit (RM00020).

Exposure time: 90s.