

A28130

Leader in Biomolecular Solutions for Life Science



www.abclonal.com

Biotin Rabbit anti-Mouse CD11b mAb

Catalog No.: A28130

Basic Information

Observed MW

Calculated MW

127kDa

Category

Monoclonal Antibody

Applications

FC

Cross-Reactivity

Mouse

Conjugate

Biotin

Background

Enables complement component C3b binding activity; heparan sulfate proteoglycan binding activity; and heparin binding activity. Contributes to cargo receptor activity. Involved in several processes, including central nervous system development; endocytosis; and positive regulation of neuron death. Acts upstream of or within several processes, including activated T cell proliferation; leukocyte migration; and microglia development. Located in external side of plasma membrane and nucleus. Is integral component of membrane. Part of integrin alphaM-beta2 complex. Is expressed in several structures, including central nervous system; heart; lymphatic vessel; thymus; and yolk sac. Human ortholog(s) of this gene implicated in lupus nephritis. Orthologous to human ITGAM (integrin subunit alpha M).

Recommended Dilutions

FC $\leq 0.25 \mu\text{g}$ per million cells in 100 μl volume

Immunogen Information

Gene ID

16409

Swiss Prot

P05555

Immunogen

Recombinant protein (or fragment). This information is considered to be commercially sensitive.

Synonyms

CR3; CR3A; MAC1; Cd11b; Ly-40; Mac-1; Mac-1a; CD11b/CD18; F730045J24Rik

Contact



www.abclonal.com

Product Information

Source

Rabbit

Isotype

IgG

Purification

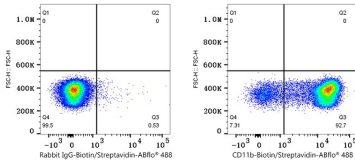
Affinity purification

Storage

Store at 2-8°C. Avoid freeze.

Buffer: PBS with 0.09% Sodium azide, 0.2% BSA, pH7.3.

Validation Data



Flow cytometry: 1×10^6 C57BL/6 mouse bone marrow cells were surface-stained with Biotin Rabbit IgG isotype control (A25626, 5 μ l/Test, left) or Biotin Rabbit anti-Mouse CD11b mAb (A28130, 0.25 μ g, right), followed by ABflo® 488 Streptavidin staining.