

A2799

Leader in Biomolecular Solutions for Life Science



SLC18A2 Rabbit pAb

Catalog No.: A2799

Basic Information

Observed MW

56kDa

Calculated MW

56kDa

Category

Polyclonal Antibody

Applications

WB,IHC-P,ELISA

Cross-Reactivity

Human,Mouse,Rat

Background

This gene encodes an transmembrane protein that functions as an ATP-dependent transporter of monoamines, such as dopamine, norepinephrine, serotonin, and histamine. This protein transports amine neurotransmitters into synaptic vesicles. Polymorphisms in this gene may be associated with schizophrenia, bipolar disorder, and other neurological/psychiatric ailments.

Recommended Dilutions

WB 1:1000 - 1:2000

IHC-P 1:50 - 1:200

ELISA Recommended starting concentration is 1 µg/mL. Please optimize the concentration based on your specific assay requirements.

Immunogen Information

Gene ID

6571

Swiss Prot

Q05940

Immunogen

Recombinant fusion protein containing a sequence corresponding to amino acids 50-130 of human SLC18A2 (NP_003045.2).

Synonyms

SVAT; SVMT; VAT2; VMAT2; PKDYS2; SLC18A2

Contact

 www.abclonal.com

Product Information

Source

Rabbit

Isotype

IgG

Purification

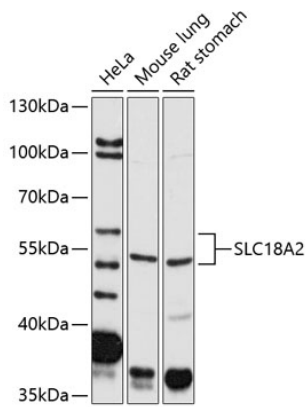
Affinity purification

Storage

Store at -20°C. Avoid freeze / thaw cycles.

Buffer: PBS with 0.09% Sodium azide,50% glycerol,pH7.3.

Validation Data



Western blot analysis of various lysates using SLC18A2 Rabbit pAb (A2799) at 1:2000 dilution.

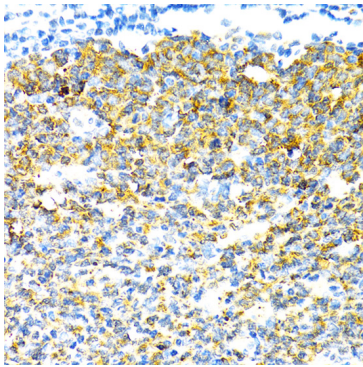
Secondary antibody: HRP-conjugated Goat anti-Rabbit IgG (H+L) (AS014) at 1:10000 dilution.

Lysates/proteins: 25µg per lane.

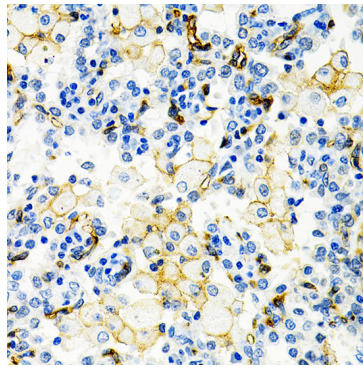
Blocking buffer: 3% nonfat dry milk in TBST.

Detection: ECL Basic Kit (RM00020).

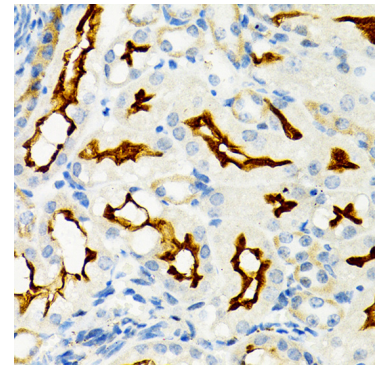
Exposure time: 30s.



Immunohistochemistry analysis of paraffin-embedded Human appendix tissue using SLC18A2 Rabbit pAb (A2799) at a dilution of 1:100 (40x lens). Microwave antigen retrieval was performed with 0.01 M PBS buffer (pH 7.2±0.2) prior to IHC staining.



Immunohistochemistry analysis of paraffin-embedded Human lung cancer tissue using SLC18A2 Rabbit pAb (A2799) at a dilution of 1:100 (40x lens). Microwave antigen retrieval was performed with 0.01 M PBS buffer (pH 7.2±0.2) prior to IHC staining.



Immunohistochemistry analysis of paraffin-embedded Mouse kidney tissue using SLC18A2 Rabbit pAb (A2799) at a dilution of 1:100 (40x lens). Microwave antigen retrieval was performed with 0.01 M PBS buffer (pH 7.2±0.2) prior to IHC staining.