

A27940

Leader in Biomolecular Solutions for Life Science



PE Rabbit anti-Mouse Podoplanin mAb

Catalog No.: A27940

Basic Information

Observed MW

Calculated MW

18kDa

Category

SMab Recombinant Monoclonal Antibody

Applications

FC

Cross-Reactivity

Mouse

Conjugate

PE. Ex:565nm. Em:574nm.

Background

Predicted to enable chaperone binding activity; chemokine binding activity; and signaling receptor binding activity. Involved in several processes, including lymph node development; lymphatic endothelial cell fate commitment; and positive regulation of platelet aggregation. Acts upstream of or within several processes, including lung alveolus development; lymphangiogenesis; and prostaglandin metabolic process. Located in several cellular components, including external side of plasma membrane; lamellipodium; and ruffle. Is expressed in several structures, including alimentary system; cardiovascular system; central nervous system; hemolymphoid system; and reproductive system. Orthologous to human PDPN (podoplanin).

Recommended Dilutions

FC $\leq 0.5 \mu\text{g}$ per million cells
in 100 μl volume

Immunogen Information

Gene ID

14726

Swiss Prot

Q62011

Immunogen

Recombinant fusion protein containing a sequence corresponding to amino acids 21-133 of mouse Podoplanin (NP_034359.2).

Synonyms

E11; T1a; Gp38; OTS-8; T1alpha; RANDAM-2; T1-alpha

Contact

 www.abclonal.com

Product Information

Source

Rabbit

Isotype

IgG

Purification

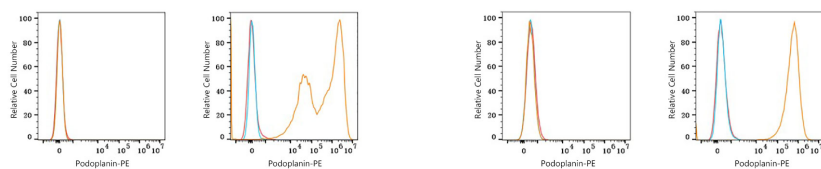
Affinity purification

Storage

Store at 2-8°C. Avoid freeze.

Buffer: PBS with 0.09% Sodium azide, 0.2% BSA, pH7.3.

Validation Data



Flow cytometry: 1×10^6 293T cells (negative control, left) and 293T (Transfection, right) cells were surface-stained with PE Rabbit anti-Mouse Podoplanin mAb (A27940, 0.5 μ g, orange line) or PE Rabbit IgG isotype control (A24172, 5 μ l/Test, blue line). Non-fluorescently stained cells were used as blank control (red line).

Flow cytometry: 1×10^6 Neuro-2a cells (negative control, left) and C2C12 cells (right) were surface-stained with PE Rabbit anti-Mouse Podoplanin mAb (A27940, 0.5 μ g, orange line) or PE Rabbit IgG isotype control (A24172, 5 μ l/Test, blue line). Non-fluorescently stained cells were used as blank control (red line).