

A27895

Leader in Biomolecular Solutions for Life Science



## PKD2 Rabbit pAb

Catalog No.: A27895

### Basic Information

**Observed MW**

105kDa

**Calculated MW**

110kDa

**Category**

Polyclonal Antibody

**Applications**

WB, ELISA

**Cross-Reactivity**

Human, Mouse, Rat

### Background

This gene encodes a member of the polycystin protein family. The encoded protein is a multi-pass membrane protein that functions as a calcium permeable cation channel, and is involved in calcium transport and calcium signaling in renal epithelial cells. This protein interacts with polycystin 1, and they may be partners in a common signaling cascade involved in tubular morphogenesis. Mutations in this gene are associated with autosomal dominant polycystic kidney disease type 2.

### Recommended Dilutions

**WB** 1:1500 - 1:6000

**ELISA** Recommended starting concentration is 1 µg/mL. Please optimize the concentration based on your specific assay requirements.

### Immunogen Information

**Gene ID**

5311

**Swiss Prot**

Q13563

**Immunogen**

A synthetic peptide corresponding to a sequence within amino acids 731-830 of human PKD2 (NP\_000288.1).

**Synonyms**

PC2; PKD4; Pc-2; APKD2; TRPP2

### Contact

 [www.abclonal.com](http://www.abclonal.com)

### Product Information

**Source**

Rabbit

**Isotype**

IgG

**Purification**

Affinity purification

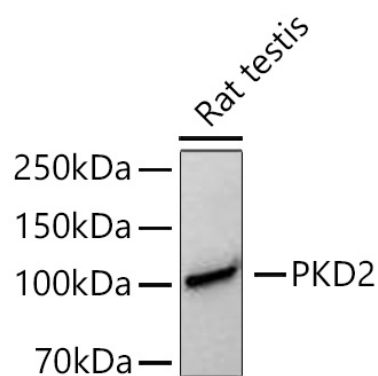
**Storage**

Store at -20°C. Avoid freeze / thaw cycles.

Buffer: PBS with 0.09% Sodium azide, 50% glycerol, pH 7.3.

## Validation Data

---



Western blot analysis of lysates from Rat testis using PKD2 Rabbit pAb (A27895) at 1:3000 dilution incubated at room temperature for 1.5 hours.  
Secondary antibody: HRP-conjugated Goat anti-Rabbit IgG (H+L) (AS014) at 1:10000 dilution.  
Lysates/proteins: 25 µg per lane.  
Blocking buffer: 3% nonfat dry milk in TBST.  
Detection: ECL Basic Kit (RM00020).  
Exposure time: 45s.