

A27810

Leader in Biomolecular Solutions for Life Science



PE Rabbit anti-G4S Linker mAb

Catalog No.: A27810

Basic Information

Observed MW

Calculated MW

Category

Monoclonal Antibody

Applications

FC

Cross-Reactivity

Species independent

Conjugate

PE. Ex:565nm. Em:574nm.

Background

The G4S Linker (polyglycine-serine linker) is a flexible polypeptide linker composed of repeating glycine (Gly) and serine (Ser) residues. Its core structural unit is a pentapeptide sequence $\square \square \text{Gly-Gly-Gly-Gly-Ser} \square \square$ (abbreviated as G4S), which polymerizes into multimeric forms such as the $\square \square \text{15-mer (G4S)}_3 \square \square$ (three repeats) or $\square \square \text{20-mer (G4S)}_4 \square \square$ (four repeats). This sequence design confers high flexibility and unstructured properties, effectively minimizing steric hindrance between connected protein domains. The evolutionary conservation and broad applicability of the G4S Linker have established it as a critical target in antibody engineering and therapeutic development.

Recommended Dilutions

FC $\leq 0.2 \mu\text{g}$ per million cells
in 100 μl volume

Immunogen Information

Gene ID

Swiss Prot

Immunogen

Synthetic peptide. This information is considered to be commercially sensitive.

Synonyms

Contact

 www.abclonal.com

Product Information

Source
Rabbit

Isotype
IgG

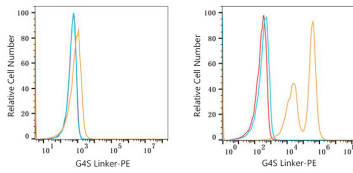
Purification
Affinity purification

Storage

Store at 2-8°C. Avoid freeze.

Buffer: PBS with 0.09% Sodium azide, 0.2% BSA, pH 7.3.

Validation Data



Flow cytometry: 1×10^6 293T cells (negative control, left) and 293T cells engineered to express an scFv-based anti-CD27 containing a G4S linker (right) were surface-stained with PE Rabbit anti-G4S Linker mAb (A27810, 0.2 μ g, orange line) or PE Rabbit IgG isotype control (A24172, 5 μ l/Test, blue line). Non-fluorescently stained cells were used as blank control (red line).