

A27794

Leader in Biomolecular Solutions for Life Science



[KO Validated] Abhd6 Rabbit mAb

Catalog No.: A27794

KO

Validated

Recombinant

Basic Information

Observed MW

38kDa

Calculated MW

38kDa

Category

SMab Recombinant Monoclonal
Antibody

Applications

WB,IHC-P,IF/ICC,ELISA

Cross-Reactivity

Human,Mouse,Rat

Background

Enables monoacylglycerol lipase activity. Involved in acylglycerol catabolic process. Predicted to be located in late endosome membrane and lysosomal membrane. Predicted to be part of AMPA glutamate receptor complex. Predicted to be active in GABA-ergic synapse; glutamatergic synapse; and postsynaptic membrane.

Recommended Dilutions

WB 1:6000 - 1:24000

IF/ICC 1:100 - 1:400

IHC-P 1:100 - 1:400

ELISA Recommended starting concentration is 1 µg/mL. Please optimize the concentration based on your specific assay requirements.

Immunogen Information

Gene ID

66082

Swiss Prot

Q8R2Y0

Immunogen

Recombinant fusion protein containing a sequence corresponding to amino acids 119-315 of mouse Abhd6 (NP_001317993.1).

Synonyms

AA673485; AV065425; 0610041D24Rik; ABHD6

Product Information

Source

Rabbit

Isotype

IgG

Purification

Affinity purification

Storage

Store at -20°C. Avoid freeze / thaw cycles.

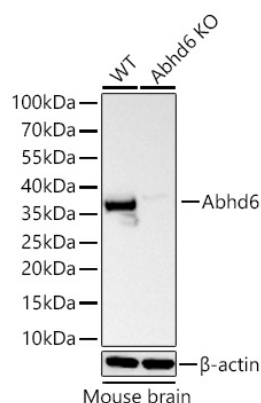
Buffer: PBS with 0.09% Sodium azide,0.05% BSA,50% glycerol,pH7.3.

Contact



www.abclonal.com

Validation Data



Western blot analysis of lysates from wild type (WT) and Abhd6 knockout (KO) Mouse brain using [KO Validated] Abhd6 Rabbit mAb (A27794) at 1:6000 dilution incubated overnight at 4°C.

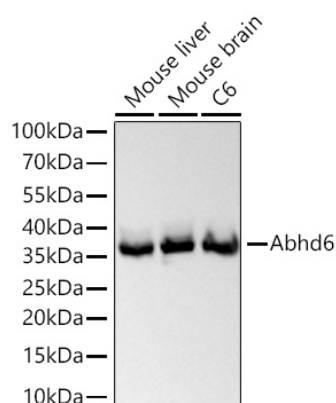
Secondary antibody: HRP-conjugated Goat anti-Rabbit IgG (H+L) (AS014) at 1:10000 dilution.

Lysates/proteins: 25 μ g per lane.

Blocking buffer: 3% nonfat dry milk in TBST.

Detection: ECL Basic Kit (RM00020).

Exposure time: 20s.



Western blot analysis of various lysates using [KO Validated] Abhd6 Rabbit mAb (A27794) at 1:6000 dilution incubated overnight at 4°C.

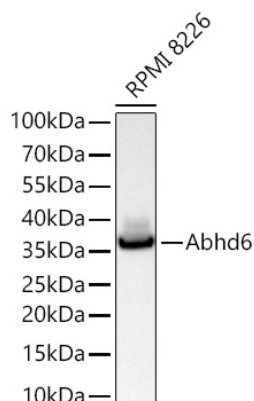
Secondary antibody: HRP-conjugated Goat anti-Rabbit IgG (H+L) (AS014) at 1:10000 dilution.

Lysates/proteins: 25 μ g per lane.

Blocking buffer: 3% nonfat dry milk in TBST.

Detection: ECL Basic Kit (RM00020).

Exposure time: 20s.



Western blot analysis of lysates from RPMI 8226 cells using [KO Validated] Abhd6 Rabbit mAb (A27794) at 1:6000 dilution incubated overnight at 4°C.

Secondary antibody: HRP-conjugated Goat anti-Rabbit IgG (H+L) (AS014) at 1:10000 dilution.

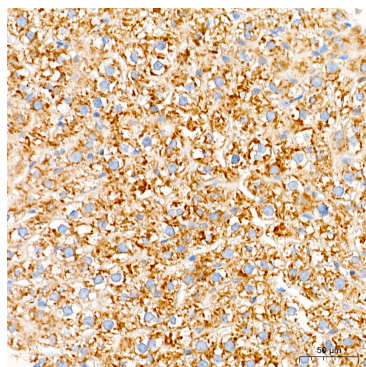
Lysates/proteins: 25 μ g per lane.

Blocking buffer: 3% nonfat dry milk in TBST.

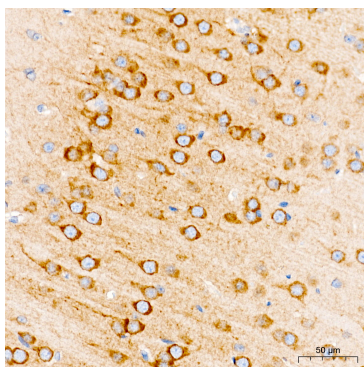
Detection: ECL Basic Kit (RM00020).

Exposure time: 60s.

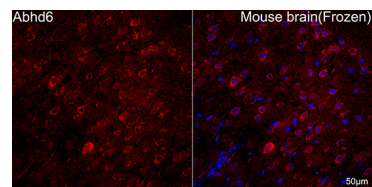
Validation Data



Immunohistochemistry analysis of paraffin-embedded Rat liver tissue using [KO Validated] Abhd6 Rabbit mAb (A27794) at a dilution of 1:200 (40x lens). High pressure antigen retrieval performed with 0.01M Tris-EDTA Buffer (pH 9.0) prior to IHC staining.



Immunohistochemistry analysis of paraffin-embedded Rat brain tissue using [KO Validated] Abhd6 Rabbit mAb (A27794) at a dilution of 1:200 (40x lens). High pressure antigen retrieval performed with 0.01M Tris-EDTA Buffer (pH 9.0) prior to IHC staining.



Confocal imaging of frozen sections Mouse brain tissue using [KO Validated] Abhd6 Rabbit mAb (A27794, dilution 1:200) followed by a further incubation with Cy3 Goat Anti-Rabbit IgG (H+L) (AS007, dilution 1:500) (Red). DAPI was used for nuclear staining (Blue). Microwave antigen retrieval performed with 0.01M Citrate Buffer (pH 6.0) prior to IF staining. Objective: 40x.