

A27738

Leader in Biomolecular Solutions for Life Science



# DLST Rabbit mAb

Catalog No.: A27738 **Recombinant**

## Basic Information

### Observed MW

55kDa

### Calculated MW

49kDa

### Category

SMab Recombinant Monoclonal  
Antibody

### Applications

WB,IHC-P,IF/ICC,ELISA

### Cross-Reactivity

Human

## Background

This gene encodes a mitochondrial protein that belongs to the 2-oxoacid dehydrogenase family. This protein is one of the three components (the E2 component) of the 2-oxoglutarate dehydrogenase complex that catalyzes the overall conversion of 2-oxoglutarate to succinyl-CoA and CO<sub>2</sub>. Alternatively spliced transcript variants have been found for this gene.

## Recommended Dilutions

**WB** 1:12000 - 1:72000

**IF/ICC** 1:100 - 1:400

**IHC-P** 1:2000 - 1:20000

**ELISA** Recommended starting concentration is 1 µg/mL. Please optimize the concentration based on your specific assay requirements.

## Immunogen Information

### Gene ID

1743

### Swiss Prot

P36957

### Immunogen

Synthetic peptide. This information is considered to be commercially sensitive.

### Synonyms

DLTS; KGD2; PGL7

## Product Information

### Source

Rabbit

### Isotype

IgG

### Purification

Affinity purification

### Storage

Store at -20°C. Avoid freeze / thaw cycles.

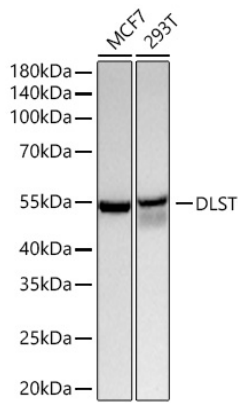
Buffer: PBS with 0.09% Sodium azide,0.05% BSA,50% glycerol,pH7.3.

## Contact

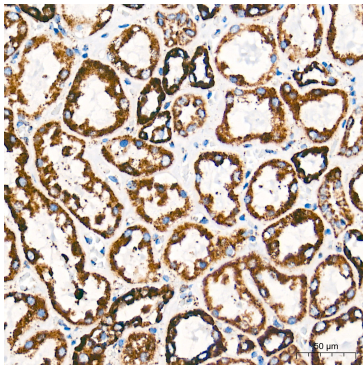


[www.abclonal.com](http://www.abclonal.com)

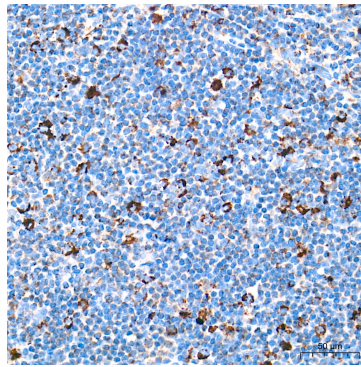
## Validation Data



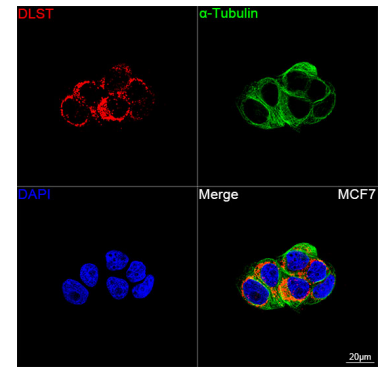
Western blot analysis of various lysates using DLST Rabbit mAb (A27738) at 1:12000 dilution incubated at room temperature for 1.5 hours.  
 Secondary antibody: HRP-conjugated Goat anti-Rabbit IgG (H+L) (AS014) at 1:10000 dilution.  
 Lysates/proteins: 25 µg per lane.  
 Blocking buffer: 3% nonfat dry milk in TBST.  
 Detection: ECL Basic Kit (RM00020).  
 Exposure time: 1s.



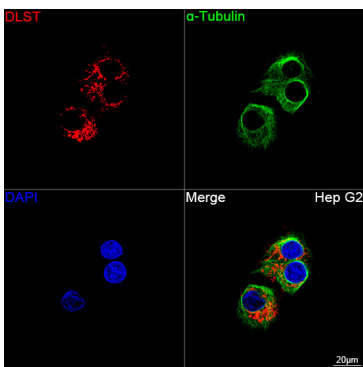
Immunohistochemistry analysis of paraffin-embedded Human kidney tissue using DLST Rabbit mAb (A27738) at a dilution of 1:6000 (40x lens). High pressure antigen retrieval performed with 0.01M Tris-EDTA Buffer (pH 9.0) prior to IHC staining.



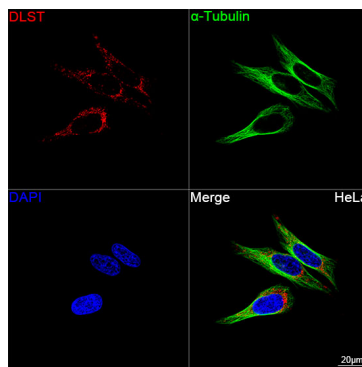
Immunohistochemistry analysis of paraffin-embedded Human tonsil tissue using DLST Rabbit mAb (A27738) at a dilution of 1:6000 (40x lens). High pressure antigen retrieval performed with 0.01M Tris-EDTA Buffer (pH 9.0) prior to IHC staining.



Confocal imaging of MCF7 cells using DLST Rabbit mAb (A27738, dilution 1:200) followed by a further incubation with Cy3 Goat Anti-Rabbit IgG (H+L) (AS007, dilution 1:500) (Red). The cells were counterstained with α-Tubulin Mouse mAb (AC012, dilution 1:400) followed by incubation with ABflo® 488-conjugated Goat Anti-Mouse IgG (H+L) Ab (AS076, dilution 1:500) (Green). DAPI was used for nuclear staining (Blue). Objective: 100x.



Confocal imaging of Hep G2 cells using DLST Rabbit mAb (A27738, dilution 1:200) followed by a further incubation with Cy3 Goat Anti-Rabbit IgG (H+L) (AS007, dilution 1:500)



Confocal imaging of HeLa cells using DLST Rabbit mAb (A27738, dilution 1:200) followed by a further incubation with Cy3 Goat Anti-Rabbit IgG (H+L) (AS007, dilution 1:500)

## Validation Data

---

(Red). The cells were counterstained with  $\alpha$ -Tubulin Mouse mAb (AC012, dilution 1:400) followed by incubation with ABflo® 488-conjugated Goat Anti-Mouse IgG (H+L) Ab (AS076, dilution 1:500) (Green). DAPI was used for nuclear staining (Blue). Objective: 100x.

(Red). The cells were counterstained with  $\alpha$ -Tubulin Mouse mAb (AC012, dilution 1:400) followed by incubation with ABflo® 488-conjugated Goat Anti-Mouse IgG (H+L) Ab (AS076, dilution 1:500) (Green). DAPI was used for nuclear staining (Blue). Objective: 100x.