

A27556

Leader in Biomolecular Solutions for Life Science



## PE Mouse anti-Human CD11c mAb

Catalog No.: A27556

### Basic Information

#### Observed MW

#### Calculated MW

128kDa

#### Category

Monoclonal Antibody

#### Applications

FC

#### Cross-Reactivity

Human

#### Conjugate

PE. Ex:565nm. Em:574nm.

### Background

This gene encodes the integrin alpha X chain protein. Integrins are heterodimeric integral membrane proteins composed of an alpha chain and a beta chain. This protein combines with the beta 2 chain (ITGB2) to form a leukocyte-specific integrin referred to as inactivated-C3b (iC3b) receptor 4 (CR4). The alpha X beta 2 complex seems to overlap the properties of the alpha M beta 2 integrin in the adherence of neutrophils and monocytes to stimulated endothelium cells, and in the phagocytosis of complement coated particles. Two transcript variants encoding different isoforms have been found for this gene.

### Recommended Dilutions

FC 5  $\mu$ l per  $10^6$  cells in  
100  $\mu$ l volume

### Immunogen Information

#### Gene ID

3687

#### Swiss Prot

P20702

#### Immunogen

Recombinant protein of human CD11c.

#### Synonyms

CD11C; SLEB6

### Contact

 [www.abclonal.com](http://www.abclonal.com)

### Product Information

#### Source

Mouse

#### Isotype

IgG

#### Purification

Affinity purification

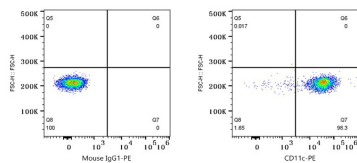
#### Storage

Store at 2-8°C. Avoid freeze.

Buffer: PBS with 0.09% Sodium azide, 0.2% BSA, pH7.3.

## Validation Data

---



Flow cytometry: 1X10<sup>6</sup> Human PBMC were surface-stained with PE Mouse IgG1 isotype control (5 µl/Test,left) or PE Mouse anti-Human CD11c mAb (A27556,5 µl/Test,right). Cells in the monocyte gate were used for analysis.