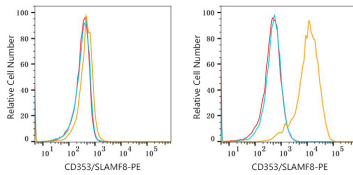


Validation Data



Flow cytometry: 1×10^6 THP-1 cells (untreated, left) and THP-1 cells (treated with 100 ng/mL PMA for 48 hours, right) were surface-stained with PE Rabbit anti-Human CD353/SLAMF8 mAb (A27549, 5 μ /Test, orange line) or PE Rabbit IgG isotype control (A24172, 5 μ /Test, blue line). Non-fluorescently stained cells were used as blank control (red line).