

A27428

Leader in Biomolecular Solutions for Life Science



## PE Rabbit anti-Human MICA/MICB mAb

Catalog No.: A27428

### Basic Information

#### Observed MW

#### Calculated MW

4kDa/31kDa/37kDa/43kDa

#### Category

SMab Recombinant Monoclonal  
Antibody

#### Applications

FC

#### Cross-Reactivity

Human

#### Conjugate

PE. Ex:565nm. Em:574nm.

### Background

This gene encodes a heavily glycosylated protein which is a ligand for the NKG2D type II receptor. Binding of the ligand activates the cytolytic response of natural killer (NK) cells, CD8 alphabeta T cells, and gammadelta T cells which express the receptor. This protein is stress-induced and is similar to MHC class I molecules; however, it does not associate with beta-2-microglobulin or bind peptides. Alternative splicing results in multiple transcript variants.

### Recommended Dilutions

FC 5  $\mu$ l per  $10^6$  cells in  
100  $\mu$ l volume

### Immunogen Information

**Gene ID**  
100507436/4277

**Swiss Prot**  
Q29983/Q29980

#### Immunogen

Recombinant protein (or fragment). This information is considered to be commercially sensitive.

#### Synonyms

MIC-A; PERB11.1; PERB11.2; MICB

### Contact

 [www.abclonal.com](http://www.abclonal.com)

### Product Information

**Source**  
Rabbit

**Isotype**  
IgG

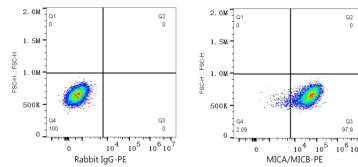
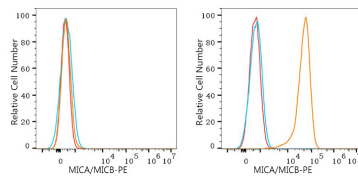
**Purification**  
Affinity purification

#### Storage

Store at 2-8°C. Avoid freeze.

Buffer: PBS with 0.09% Sodium azide, 0.2% BSA, pH7.3.

## Validation Data



Flow cytometry:  $1 \times 10^6$  SH-SY5Y cells (negative control, left) and K-562 cells (right) were surface-stained with PE Rabbit anti-Human MICA/MICB mAb (A27428, 5  $\mu$ l/Test, orange line) or PE Rabbit IgG isotype control (A24172, 5  $\mu$ l/Test, blue line). Non-fluorescently stained cells were used as blank control (red line).

Flow cytometry:  $1 \times 10^6$  K-562 cells were surface-stained with PE Rabbit IgG isotype control (A24172, 5  $\mu$ l/Test, left) or PE Rabbit anti-Human MICA/MICB mAb (A27428, 5  $\mu$ l/Test, right).