

A27386

Leader in Biomolecular Solutions for Life Science



PE Rabbit anti-Human Calreticulin mAb

Catalog No.: A27386

Basic Information

Observed MW

Calculated MW

48kDa

Category

SMab Recombinant Monoclonal Antibody

Applications

FC (intra)

Cross-Reactivity

Human

Conjugate

PE. Ex:565nm. Em:574nm.

Background

Calreticulin is a highly conserved chaperone protein which resides primarily in the endoplasmic reticulum, and is involved in a variety of cellular processes, among them, cell adhesion. Additionally, it functions in protein folding quality control and calcium homeostasis. Calreticulin is also found in the nucleus, suggesting that it may have a role in transcription regulation. Systemic lupus erythematosus is associated with increased autoantibody titers against calreticulin. Recurrent mutations in calreticulin have been linked to various neoplasms, including the myeloproliferative type.

Recommended Dilutions

FC (intra) 5 µl per 10⁶ cells in
100 µl volume

Immunogen Information

Gene ID

811

Swiss Prot

P27797

Immunogen

Recombinant fusion protein containing a sequence corresponding to amino acids 335-417 of human Calreticulin (NP_004334.1).

Synonyms

RO; CRT; SSA; cC1qR; HEL-S-99n

Contact



www.abclonal.com

Product Information

Source

Rabbit

Isotype

IgG

Purification

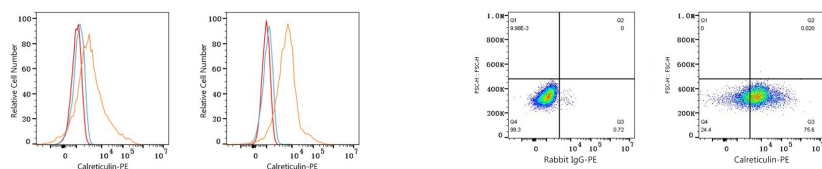
Affinity purification

Storage

Store at 2-8°C. Avoid freeze.

Buffer: PBS with 0.09% Sodium azide, 0.2% BSA, pH7.3.

Validation Data



Flow cytometry: 1×10^6 knockout (KO) HeLa cells (negative control, left) and HeLa cells (right) were intracellularly-stained with PE Rabbit anti-Human Calreticulin mAb (A27386, 5 μ l/Test, orange line) or PE Rabbit IgG isotype control (A24172, 5 μ l/Test, blue line). Non-fluorescently stained cells were used as blank control (red line).

Flow cytometry: 1×10^6 HeLa cells were intracellularly-stained with PE Rabbit IgG isotype control (A24172, 5 μ l/Test, left) or PE Rabbit anti-Human Calreticulin mAb (A27386, 5 μ l/Test, right).