

A27370

Leader in Biomolecular Solutions for Life Science



CXCL10/IP-10 Rabbit mAb

Catalog No.: A27370 **Recombinant**

Basic Information

Observed MW

11kDa

Calculated MW

11kDa

Category

SMab Recombinant Monoclonal
Antibody

Applications

WB,IHC-P,IF/ICC,ELISA

Cross-Reactivity

Human

Background

This antimicrobial gene encodes a chemokine of the CXC subfamily and ligand for the receptor CXCR3. Binding of this protein to CXCR3 results in pleiotropic effects, including stimulation of monocytes, natural killer and T-cell migration, and modulation of adhesion molecule expression. This gene may also be a key regulator of the 'cytokine storm' immune response to SARS-CoV-2 infection.

Recommended Dilutions

WB	1:10000 - 1:60000
IHC-P	1:200 - 1:800
IF/ICC	1:100 - 1:400
ELISA	Recommended starting concentration is 1 µg/mL. Please optimize the concentration based on your specific assay requirements.

Contact



www.abclonal.com

Immunogen Information

Gene ID

3627

Swiss Prot

P02778

Immunogen

Recombinant protein (or fragment). This information is considered to be commercially sensitive.

Synonyms

C7; IFI10; INP10; IP-10; crg-2; mob-1; SCYB10; gIP-10; CXCL10/IP-10

Product Information

Source

Rabbit

Isotype

IgG

Purification

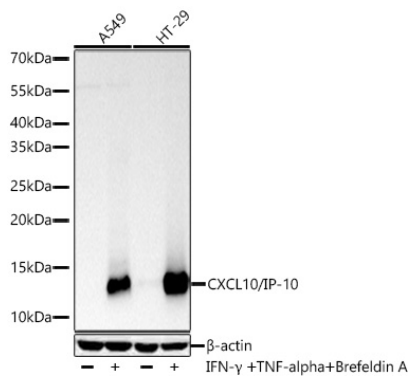
Affinity purification

Storage

Store at -20°C. Avoid freeze / thaw cycles.

Buffer: PBS containing 50% glycerol and 0.05% BSA, preserved with proclin300 or sodium azide (as specified on the Certificate of Analysis), pH 7.3.

Validation Data



Western blot analysis of various lysates using CXCL10/IP-10 Rabbit mAb (A27370) at 1:10000 dilution incubated overnight at 4°C. A549 cells and HT-29 cells were treated with TNF- α (20ng/mL) for 6 hours, Brefeldin A (300ng/mL) for 3 hours and IFN- γ (50ng/mL) for 8 hours.

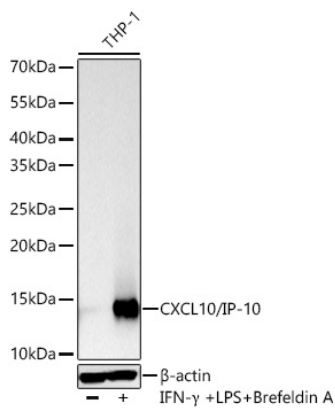
Secondary antibody: HRP-conjugated Goat anti-Rabbit IgG (H+L) (AS014) at 1:10000 dilution.

Lysates/proteins: 30 μ g per lane.

Blocking buffer: 3% nonfat dry milk in TBST.

Detection: ECL Basic Kit (RM00020).

Exposure time: 5s.



Western blot analysis of lysates from THP-1 cells using CXCL10/IP-10 Rabbit mAb (A27370) at 1:10000 dilution incubated overnight at 4°C. THP-1 cells were treated with LPS (1 μ g/ml), IFN- γ (100 ng/mL) and Brefeldin A (300 ng/mL) for 8 hours.

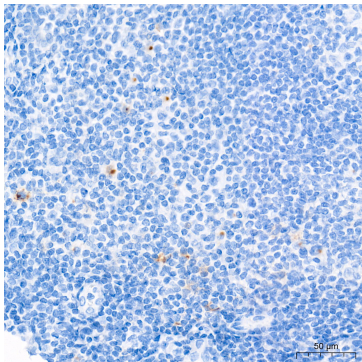
Secondary antibody: HRP-conjugated Goat anti-Rabbit IgG (H+L) (AS014) at 1:10000 dilution.

Lysates/proteins: 30 μ g per lane.

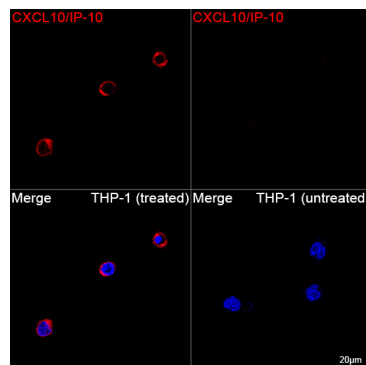
Blocking buffer: 3% nonfat dry milk in TBST.

Detection: ECL Basic Kit (RM00020).

Exposure time: 5s.



Immunohistochemistry analysis of paraffin-embedded Human tonsil tissue using CXCL10/IP-10 Rabbit mAb (A27370) at a dilution of 1:500 (40x lens). High pressure antigen retrieval performed with 0.01M Tris-EDTA Buffer (pH 9.0) prior to IHC staining.



Confocal imaging of THP-1 cells (treated with IFN- γ , LPS and BFA) and THP-1 cells (untreated) using CXCL10/IP-10 Rabbit mAb (A27370, dilution 1:200) followed by a further incubation with Cy3 Goat Anti-Rabbit IgG (H+L) (AS007, dilution 1:500) (Red). DAPI was used for nuclear staining (Blue). Objective: 100x.