

A27289

Leader in Biomolecular Solutions for Life Science



[KD Validated] Peroxiredoxin 6 Rabbit mAb

Catalog No.: A27289

Recombinant

Basic Information

Observed MW

25kDa

Calculated MW

25kDa

Category

SMab Recombinant Monoclonal
Antibody

Applications

WB,IHC-P,ELISA

Cross-Reactivity

Human,Rat

Background

The protein encoded by this gene is a member of the thiol-specific antioxidant protein family. This protein is a bifunctional enzyme with two distinct active sites. It is involved in redox regulation of the cell; it can reduce H₂O₂ and short chain organic, fatty acid, and phospholipid hydroperoxides. It may play a role in the regulation of phospholipid turnover as well as in protection against oxidative injury.

Recommended Dilutions

WB 1:12000 - 1:72000

IHC-P 1:500 - 1:2000

ELISA Recommended starting concentration is 1 µg/mL. Please optimize the concentration based on your specific assay requirements.

Immunogen Information

Gene ID
9588

Swiss Prot
P30041

Immunogen

Recombinant protein (or fragment). This information is considered to be commercially sensitive.

Synonyms

PRX; p29; AOP2; 1-Cys; NSGPx; aiPLA2; LPCAT-5; HEL-S-128m

Contact

 www.abclonal.com

Product Information

Source
Rabbit

Isotype
IgG

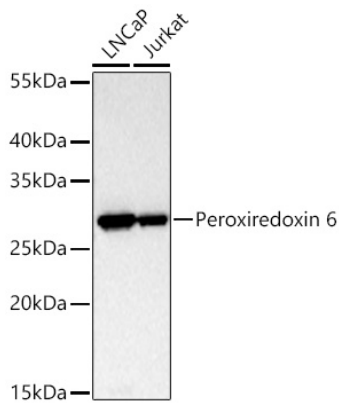
Purification
Affinity purification

Storage

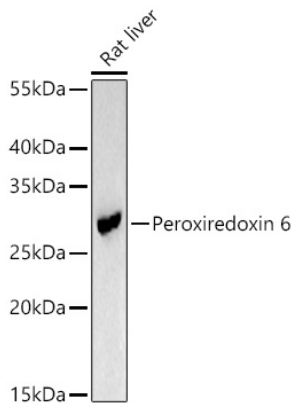
Store at -20°C. Avoid freeze / thaw cycles.

Buffer: PBS with 0.09% Sodium azide, 0.05% BSA, 50% glycerol, pH7.3.

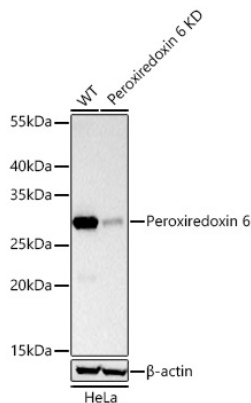
Validation Data



Western blot analysis of various lysates using [KD Validated] Peroxiredoxin 6 Rabbit mAb (A27289) at 1:12000 dilution incubated overnight at 4°C.
Secondary antibody: HRP-conjugated Goat anti-Rabbit IgG (H+L) (AS014) at 1:10000 dilution.
Lysates/proteins: 25 µg per lane.
Blocking buffer: 3% nonfat dry milk in TBST.
Detection: ECL Basic Kit (RM00020).
Exposure time: 10s.

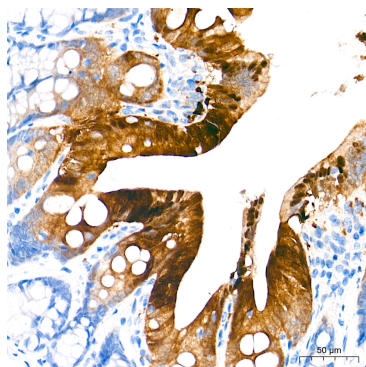


Western blot analysis of lysates from Rat liver using [KD Validated] Peroxiredoxin 6 Rabbit mAb (A27289) at 1:12000 dilution incubated overnight at 4°C.
Secondary antibody: HRP-conjugated Goat anti-Rabbit IgG (H+L) (AS014) at 1:10000 dilution.
Lysates/proteins: 25 µg per lane.
Blocking buffer: 3% nonfat dry milk in TBST.
Detection: ECL Basic Kit (RM00020).
Exposure time: 45s.

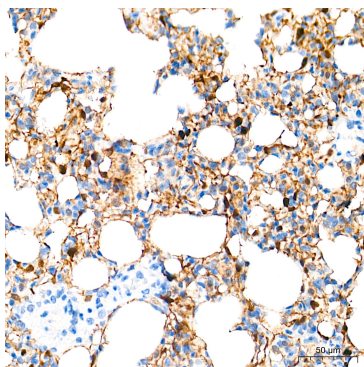


Western blot analysis of lysates from wild type (WT) and Peroxiredoxin 6 knockdown (KD) HeLa cells using [KD Validated] Peroxiredoxin 6 Rabbit mAb (A27289) at 1:12000 dilution incubated overnight at 4°C.
Secondary antibody: HRP-conjugated Goat anti-Rabbit IgG (H+L) (AS014) at 1:10000 dilution.
Lysates/proteins: 25 µg per lane.
Blocking buffer: 3% nonfat dry milk in TBST.
Detection: ECL Basic Kit (RM00020).
Exposure time: 10s.

Validation Data



Immunohistochemistry analysis of paraffin-embedded Rat colon tissue using [KD Validated] Peroxiredoxin 6 Rabbit mAb (A27289) at a dilution of 1:2000 (40x lens). High pressure antigen retrieval performed with 0.01M Tris-EDTA Buffer (pH 9.0) prior to IHC staining.



Immunohistochemistry analysis of paraffin-embedded Rat lung tissue using [KD Validated] Peroxiredoxin 6 Rabbit mAb (A27289) at a dilution of 1:2000 (40x lens). High pressure antigen retrieval performed with 0.01M Tris-EDTA Buffer (pH 9.0) prior to IHC staining.