

A27282

Leader in Biomolecular Solutions for Life Science



APC Rabbit anti-Human Siglec-7/CD328 mAb

Catalog No.: A27282

Basic Information

Observed MW

Calculated MW

51kDa

Category

SMab Recombinant Monoclonal
Antibody

Applications

FC

Cross-Reactivity

Human

Conjugate

APC. Ex:650nm. Em:660nm.

Background

Predicted to enable sialic acid binding activity. Predicted to be involved in cell adhesion. Predicted to be integral component of plasma membrane. Predicted to be active in plasma membrane.

Recommended Dilutions

FC 5 µl per 10⁶ cells in
 100 µl volume

Immunogen Information

Gene ID

27036

Swiss Prot

Q9Y286

Immunogen

Recombinant fusion protein containing a sequence corresponding to amino acids 18-144 of human Siglec-7/CD328 (NP_055200.1).

Synonyms

p75; QA79; AIRM1; CD328; AIRM-1; CDw328; D-siglec; SIGLEC-7; SIGLECP2; SIGLEC19P; p75/AIRM1

Contact

 www.abclonal.com

Product Information

Source

Rabbit

Isotype

IgG

Purification

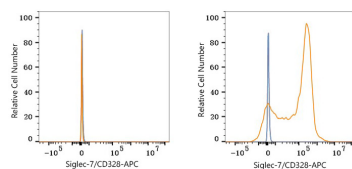
Affinity purification

Storage

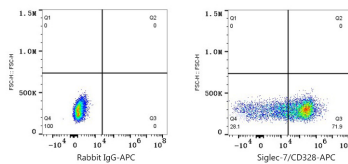
Store at 2-8°C. Avoid freeze.

Buffer: PBS with 0.09% Sodium azide,0.2% BSA,pH7.3.

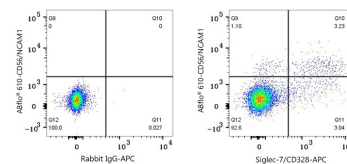
Validation Data



Flow cytometry: 1×10^6 293T cells (negative control, left) and 293T (Transfection, right) cells were surface-stained with APC Rabbit anti-Human Siglec-7/CD328 mAb (A27282, 5 μ l/Test, orange line) or APC Rabbit IgG isotype control (A24173, 5 μ l/Test, blue line). Non-fluorescently stained cells were used as blank control (red line).



Flow cytometry: 1×10^6 293T (Transfection) cells were surface-stained with APC Rabbit IgG isotype control (A24173, 5 μ l/Test, left) or APC Rabbit anti-Human Siglec-7/CD328 mAb (A27282, 5 μ l/Test, right).



Flow cytometry: 1×10^6 Human PBMC were surface-stained with ABflo® 610 Rabbit anti-Human CD56/NCAM1 mAb (A26934, 5 μ l/Test) and APC Rabbit IgG isotype control (A24173, 5 μ l/Test, left) or APC Rabbit anti-Human Siglec-7/CD328 mAb (A27282, 5 μ l/Test, right). Cells in the lymphocyte and monocytes gates were used for analysis.