

A27276

Leader in Biomolecular Solutions for Life Science



## PE Rabbit anti-Human CD336/NK-p44 mAb

Catalog No.: A27276

### Basic Information

#### Observed MW

#### Calculated MW

31kDa

#### Category

SMab Recombinant Monoclonal  
Antibody

#### Applications

FC

#### Cross-Reactivity

Human

#### Conjugate

PE. Ex:565nm. Em:574nm.

### Background

Predicted to enable signaling receptor activity. Predicted to be involved in cellular defense response and signal transduction. Predicted to be located in plasma membrane. Predicted to be integral component of plasma membrane. Predicted to be active in cell surface.

### Recommended Dilutions

FC 5  $\mu$ l per  $10^6$  cells in  
100  $\mu$ l volume

### Immunogen Information

#### Gene ID

9436

#### Swiss Prot

O95944

#### Immunogen

Recombinant fusion protein containing a sequence corresponding to amino acids 22-190 of human CD336/NK-p44 (NP\_004819.2).

#### Synonyms

LY95; CD336; NKP44; NK-p44; dJ149M18.1

### Contact



[www.abclonal.com](http://www.abclonal.com)

### Product Information

#### Source

Rabbit

#### Isotype

IgG

#### Purification

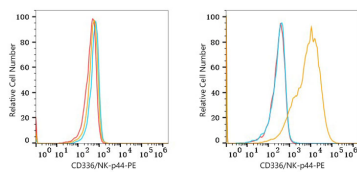
Affinity purification

#### Storage

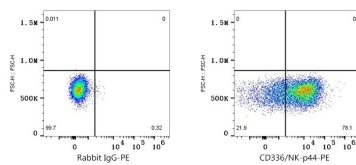
Store at 2-8°C. Avoid freeze.

Buffer: PBS with 0.09% Sodium azide, 0.2% BSA, pH7.3.

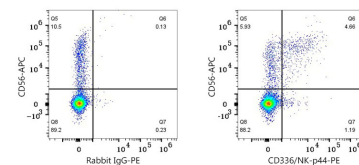
## Validation Data



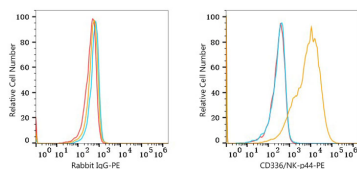
Flow cytometry:  $1 \times 10^6$  293T cells (negative control, left) and 293T (Transfection, right) cells were surface-stained with PE Rabbit anti-Human CD336/NK-p44 mAb (A27276, 5  $\mu$ l/Test, orange line) or PE Rabbit IgG isotype control (A24172, 5  $\mu$ l/Test, blue line). Non-fluorescently stained cells were used as blank control (red line).



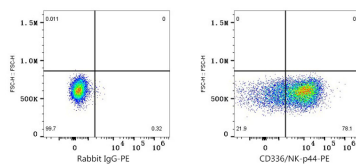
Flow cytometry:  $1 \times 10^6$  293T (Transfection) cells were surface-stained with PE Rabbit IgG isotype control (A24172, 5  $\mu$ l/Test, left) or PE Rabbit anti-Human CD336/NK-p44 mAb (A27276, 5  $\mu$ l/Test, right).



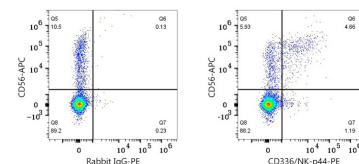
Flow cytometry:  $1 \times 10^6$  Human PBMC (treated with rhIL-2) were surface-stained with APC Mouse anti-Human CD56 mAb (A26869, 5  $\mu$ l/Test) and PE Rabbit IgG isotype control (A24172, 5  $\mu$ l/Test, left) or PE Rabbit anti-Human CD336/NK-p44 mAb (A27276, 5  $\mu$ l/Test, right). Cells in the lymphocyte gate were used for analysis.



Flow cytometry:  $1 \times 10^6$  293T cells (negative control, left) and 293T (Transfection, right) cells were surface-stained with PE Rabbit anti-Human CD336/NK-p44 mAb (A27276, 5  $\mu$ l/Test, orange line) or PE Rabbit IgG isotype control (A24172, 5  $\mu$ l/Test, blue line). Non-fluorescently stained cells were used as blank control (red line).



Flow cytometry:  $1 \times 10^6$  293T (Transfection) cells were surface-stained with PE Rabbit IgG isotype control (A24172, 5  $\mu$ l/Test, left) or PE Rabbit anti-Human CD336/NK-p44 mAb (A27276, 5  $\mu$ l/Test, right).



Flow cytometry:  $1 \times 10^6$  Human PBMCs (treated with rhIL-2 for 7 days) were surface-stained with APC Mouse anti-Human CD56 mAb (A26869, 5  $\mu$ l/Test) and PE Rabbit anti-Human CD336/NK-p44 mAb (A27276, 5  $\mu$ l/Test, right) or PE Rabbit IgG isotype control (A24172, 5  $\mu$ l/Test, left).