

A2724

Leader in Biomolecular Solutions for Life Science



EFNA3 Rabbit pAb

Catalog No.: A2724

1 Publications

Basic Information

Observed MW

30kDa

Calculated MW

26kDa

Category

Polyclonal Antibody

Applications

WB, ELISA

Cross-Reactivity

Mouse

Background

This gene encodes a member of the ephrin (EPH) family. The ephrins and EPH-related receptors comprise the largest subfamily of receptor protein-tyrosine kinases and have been implicated in mediating developmental events, especially in the nervous system and in erythropoiesis. Based on their structures and sequence relationships, ephrins are divided into the ephrin-A (EFNA) class, which are anchored to the membrane by a glycosylphosphatidylinositol linkage, and the ephrin-B (EFNB) class, which are transmembrane proteins. This gene encodes an EFNA class ephrin.

Recommended Dilutions

WB 1:200 - 1:1000

Immunogen Information

Gene ID

1944

Swiss Prot

P52797

Immunogen

Recombinant fusion protein containing a sequence corresponding to amino acids 23-214 of human EFNA3 (NP_004943.1).

Synonyms

EFL2; EPLG3; LERK3; Ehk1-L; EFNA3

Contact



www.abclonal.com

Product Information

Source

Rabbit

Isotype

IgG

Purification

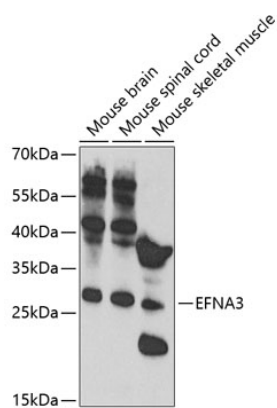
Affinity purification

Storage

Store at -20°C. Avoid freeze / thaw cycles.

Buffer: PBS with 0.02% sodium azide, 50% glycerol, pH 7.3.

Validation Data



Western blot analysis of extracts of various cell lines, using EFNA3 antibody (A2724) at 1:1000 dilution. Secondary antibody: HRP Goat Anti-Rabbit IgG (H+L) (AS014) at 1:10000 dilution. Lysates/proteins: 25µg per lane. Blocking buffer: 3% nonfat dry milk in TBST. Detection: ECL Enhanced Kit (RM00021). Exposure time: 90s.