

A27216

Leader in Biomolecular Solutions for Life Science



ABflo® 647 Rabbit anti-Human/Monkey CD18 mAb

Catalog No.: A27216

Basic Information

Observed MW

Calculated MW

85kDa

Category

Monoclonal Antibody

Applications

FC

Cross-Reactivity

Human,Cynomolgus

Conjugate

ABflo® 647. Ex:648nm. Em:664nm.

Background

This gene encodes an integrin beta chain, which combines with multiple different alpha chains to form different integrin heterodimers. Integrins are integral cell-surface proteins that participate in cell adhesion as well as cell-surface mediated signalling. The encoded protein plays an important role in immune response and defects in this gene cause leukocyte adhesion deficiency. Alternative splicing results in multiple transcript variants.

Recommended Dilutions

FC 5 µl per 10⁶ cells in
100 µl volume

Immunogen Information

Gene ID
3689

Swiss Prot
P05107

Immunogen

Recombinant protein (or fragment). This information is considered to be commercially sensitive.

Synonyms

LAD; CD18; MF17; MFI7; LCAMB; LFA-1; MAC-1

Contact

 www.abclonal.com

Product Information

Source
Rabbit

Isotype
IgG

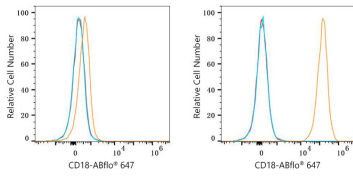
Purification
Affinity purification

Storage

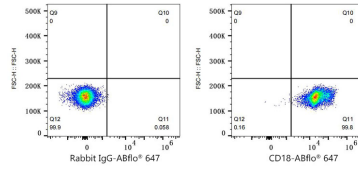
Store at 2-8°C. Avoid freeze.

Buffer: PBS with 0.09% Sodium azide, 0.2% BSA, pH 7.3.

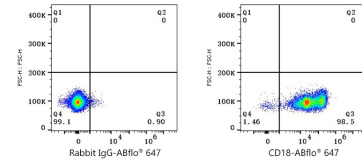
Validation Data



Flow cytometry: 1×10^6 HeLa cells (negative control, left) and THP-1 cells (right) were surface-stained with ABflo® 647 Rabbit anti-Human CD18 mAb (A27216, 5 μ l/Test, orange line) or ABflo® 647 Rabbit IgG isotype control (A22070, 5 μ l/Test, blue line). Non-fluorescently stained cells were used as blank control (red line).



Flow cytometry: 1×10^6 Human PBMC were surface-stained with ABflo® 647 Rabbit IgG isotype control (A22070, 5 μ l/Test, left) or ABflo® 647 Rabbit anti-Human CD18 mAb (A27216, 5 μ l/Test, right).



Flow cytometry: 1×10^6 Cynomolgus peripheral blood mononuclear cells were surface-stained with ABflo® 647 Rabbit IgG isotype control (A22070, 5 μ l/Test, left) or ABflo® 647 Rabbit anti-Human/Monkey CD18 mAb (A27216, 5 μ l/Test, right). Cells in the lymphocyte gate were used for analysis.