

A27212

Leader in Biomolecular Solutions for Life Science



PE Rabbit anti-Human FGFR3 mAb

Catalog No.: A27212

Basic Information

Observed MW

Calculated MW

88kDa

Category

Monoclonal Antibody

Applications

FC

Cross-Reactivity

Human

Conjugate

PE. Ex:565nm. Em:574nm.

Background

This gene encodes a member of the fibroblast growth factor receptor (FGFR) family, with its amino acid sequence being highly conserved between members and among divergent species. FGFR family members differ from one another in their ligand affinities and tissue distribution. A full-length representative protein would consist of an extracellular region, composed of three immunoglobulin-like domains, a single hydrophobic membrane-spanning segment and a cytoplasmic tyrosine kinase domain. The extracellular portion of the protein interacts with fibroblast growth factors, setting in motion a cascade of downstream signals, ultimately influencing mitogenesis and differentiation. This particular family member binds acidic and basic fibroblast growth hormone and plays a role in bone development and maintenance. Mutations in this gene lead to craniosynostosis and multiple types of skeletal dysplasia.

Recommended Dilutions

FC 5 μ l per 10^6 cells in
100 μ l volume

Immunogen Information

Gene ID

2261

Swiss Prot

P22607

Immunogen

Recombinant protein (or fragment). This information is considered to be commercially sensitive.

Synonyms

ACH; CEK2; JTK4; CD333; HSFGR3EX

Contact

 www.abclonal.com

Product Information

Source

Rabbit

Isotype

IgG

Purification

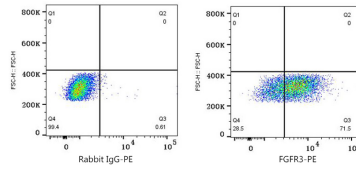
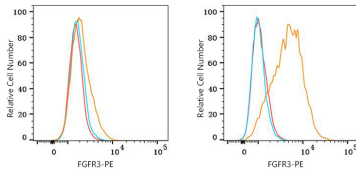
Affinity purification

Storage

Store at 2-8°C. Avoid freeze.

Buffer: PBS with 0.09% Sodium azide, 0.2% BSA, pH7.3.

Validation Data



Flow cytometry: 1×10^6 A-431 cells (negative control, left) and K-562 cells (right) were surface-stained with PE Rabbit anti-Human FGFR3 mAb (A27212, 5 $\mu\text{l}/\text{Test}$, orange line) or PE Rabbit IgG isotype control (A24172, 5 $\mu\text{l}/\text{Test}$, blue line). Non-fluorescently stained cells were used as blank control (red line).

Flow cytometry: 1×10^6 K-562 cells were surface-stained with PE Rabbit IgG isotype control (A24172, 5 $\mu\text{l}/\text{Test}$, left) or PE Rabbit anti-Human FGFR3 mAb (A27212, 5 $\mu\text{l}/\text{Test}$, right).