

A27159

Leader in Biomolecular Solutions for Life Science



# PE Rat anti-Mouse Ly-6G mAb

Catalog No.: A27159

## Basic Information

### Observed MW

### Calculated MW

14kDa

### Category

Monoclonal Antibody

### Applications

FC

### Cross-Reactivity

Mouse

### Conjugate

PE. Ex:565nm. Em:574nm.

## Background

Located in external side of plasma membrane.

## Recommended Dilutions

FC                      5 µl per 10<sup>6</sup> cells in  
                                 100 µl volume

## Immunogen Information

### Gene ID

546644

### Swiss Prot

P35461

### Immunogen

A synthesized peptide derived from mouse Ly-6G.

### Synonyms

Gr1; Gr-1; Ly-6G ; Ly-6G.1

## Contact



[www.abclonal.com](http://www.abclonal.com)

## Product Information

### Source

Rat

### Isotype

IgG2a, κ

### Purification

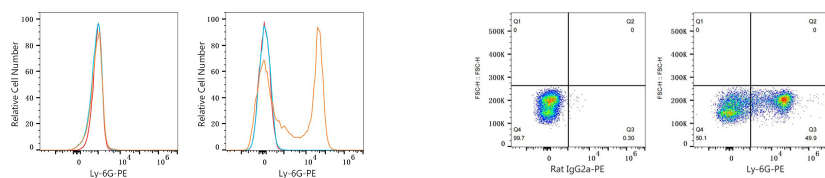
Affinity purification

### Storage

Store at 2-8°C. Avoid freeze.

Buffer: PBS with 0.09% Sodium azide,0.2% BSA,pH7.3.

## Validation Data



Flow cytometry:  $1 \times 10^6$  C2C12 cells (negative control, left) and C57BL/6 mouse bone marrow cells (right) were surface-stained with PE Rat anti-Mouse Ly-6G mAb (A27159, 5  $\mu$ l/Test, orange line) or PE Rat IgG2a isotype control (5  $\mu$ l/Test, blue line). Non-fluorescently stained cells were used as blank control (red line).

Flow cytometry:  $1 \times 10^6$  C57BL/6 mouse bone marrow cells were surface-stained with PE Rat IgG2a isotype control (5  $\mu$ l/Test, left) or PE Rat anti-Mouse Ly-6G mAb (A27159, 5  $\mu$ l/Test, right).