

A27148

Leader in Biomolecular Solutions for Life Science



# LYVE1 Rabbit mAb

Catalog No.: A27148 **Recombinant**

## Basic Information

### Observed MW

55-70kDa

### Calculated MW

34kDa

### Category

Monoclonal Antibody

### Applications

WB,IHC-P,ELISA,IF-P

### Cross-Reactivity

Mouse,Rat

## Background

Enables hyaluronic acid binding activity and transmembrane signaling receptor activity. Acts upstream of or within glycosaminoglycan catabolic process. Located in plasma membrane. Is expressed in several structures, including cardiovascular system; gut; hemolymphoid system; meninges; and metanephros. Orthologous to human LYVE1 (lymphatic vessel endothelial hyaluronan receptor 1).

## Recommended Dilutions

**WB** 1:10000 - 1:20000

**IF-P** 1:200 - 1:800

**IHC-P** 1:2000 - 1:8000

**ELISA** Recommended starting concentration is 1 µg/mL. Please optimize the concentration based on your specific assay requirements.

## Immunogen Information

### Gene ID

114332

### Swiss Prot

Q8BHC0

### Immunogen

Recombinant protein (or fragment). This information is considered to be commercially sensitive.

### Synonyms

Xlkd1; Lyve-1; Crsbp-1; 1200012G08Rik; Lyve1

## Product Information

### Source

Rabbit

### Isotype

IgG

### Purification

Affinity purification

### Storage

Store at -20°C. Avoid freeze / thaw cycles.

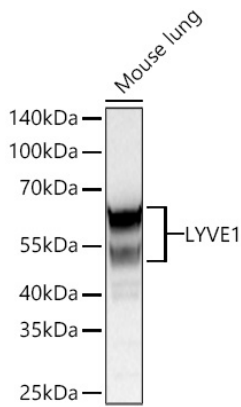
Buffer: PBS with 0.09% Sodium azide, 0.05% BSA, 50% glycerol, pH7.3.

## Contact



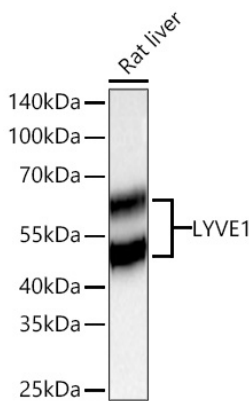
[www.abclonal.com](http://www.abclonal.com)

## Validation Data



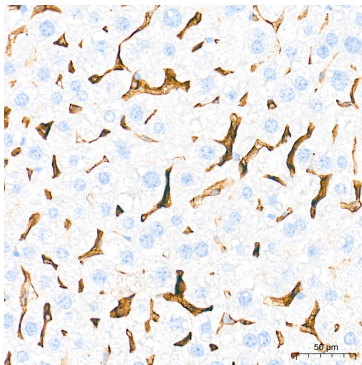
Western blot analysis of lysates from Mouse lung using LYVE1 Rabbit mAb (A27148) at 1:13000 dilution incubated overnight at 4°C.  
Secondary antibody: HRP-conjugated Goat anti-Rabbit IgG (H+L) (AS014) at 1:10000 dilution.

Lysates/proteins: 25 µg per lane.  
Blocking buffer: 3% nonfat dry milk in TBST.  
Detection: ECL Basic Kit (RM00020).  
Exposure time: 10s.

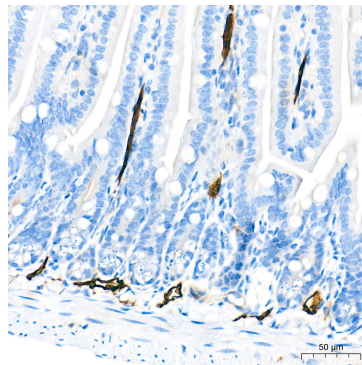


Western blot analysis of lysates from Rat liver using LYVE1 Rabbit mAb (A27148) at 1:13000 dilution incubated overnight at 4°C.  
Secondary antibody: HRP-conjugated Goat anti-Rabbit IgG (H+L) (AS014) at 1:10000 dilution.

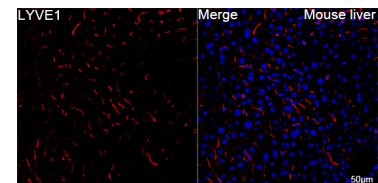
Lysates/proteins: 25 µg per lane.  
Blocking buffer: 3% nonfat dry milk in TBST.  
Detection: ECL Basic Kit (RM00020).  
Exposure time: 30s.



Immunohistochemistry analysis of paraffin-embedded Mouse liver tissue using LYVE1 Rabbit mAb (A27148) at a dilution of 1:6000 (40x lens). High pressure antigen retrieval performed with 0.01M Tris-EDTA Buffer (pH 9.0) prior to IHC staining.



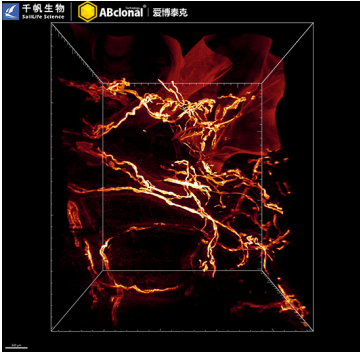
Immunohistochemistry analysis of paraffin-embedded Mouse intestine tissue using LYVE1 Rabbit mAb (A27148) at a dilution of 1:6000 (40x lens). High pressure antigen retrieval performed with 0.01M Tris-EDTA Buffer (pH 9.0) prior to IHC staining.



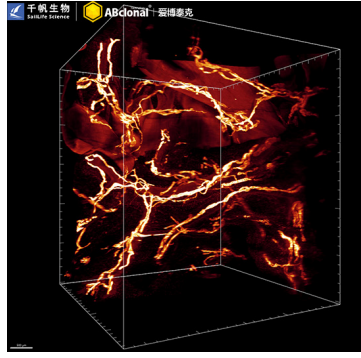
Confocal imaging of paraffin-embedded Mouse liver tissue using LYVE1 Rabbit mAb (A27148, dilution 1:200) followed by a further incubation with Cy3 Goat Anti-Rabbit IgG (H+L) (AS007, dilution 1:500) (Red). DAPI was used for nuclear staining (Blue). High pressure antigen retrieval performed with 0.01M Citrate Buffer (pH 6.0) prior to IF staining. Objective: 40x.

## Validation Data

---



3D imaging of solvent-cleared Mouse pancreas tissue using LYVE1 Rabbit mAb (A27148, dilution 1:200). SailClear Tissue Optical Clearing Kit(QF2601) was used for sample clearing. We acknowledge SailLife(Nanjing) Sci-Tech Co., Ltd. in 3D imaging processing and kindly providing this image.



3D imaging of solvent-cleared Mouse pancreas tissue using LYVE1 Rabbit mAb (A27148, dilution 1:200). SailClear Tissue Optical Clearing Kit(QF2601) was used for sample clearing. We acknowledge SailLife(Nanjing) Sci-Tech Co., Ltd. in 3D imaging processing and kindly providing this image.