

A26851

Leader in Biomolecular Solutions for Life Science



T1R3/TAS1R3 Rabbit mAb

Catalog No.: A26851

Recombinant

Basic Information

Observed MW

93kDa

Calculated MW

93kDa

Category

SMab Recombinant Monoclonal
Antibody

Applications

WB,IF/ICC,ELISA

Cross-Reactivity

Human,Rat

Background

The protein encoded by this gene is a G-protein coupled receptor involved in taste responses. The encoded protein can form a heterodimeric receptor with TAS1R1 to elicit the umami taste response, or it can bind with TAS1R2 to form a receptor for the sweet taste response.

Recommended Dilutions

WB 1:72000 - 1:720000

IF/ICC 1:200 - 1:2000

ELISA Recommended starting concentration is 1 µg/mL. Please optimize the concentration based on your specific assay requirements.

Immunogen Information

Gene ID

83756

Swiss Prot

Q7RTX0

Immunogen

Recombinant fusion protein containing a sequence corresponding to amino acids 400-570 of human T1R3/TAS1R3 (NP_689414.2).

Synonyms

T1R3

Contact



www.abclonal.com

Product Information

Source

Rabbit

Isotype

IgG

Purification

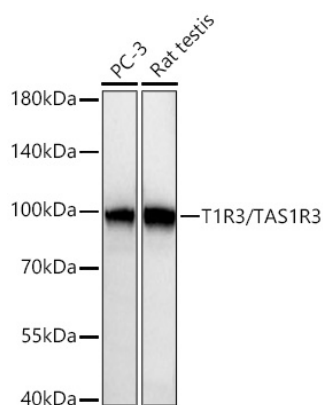
Affinity purification

Storage

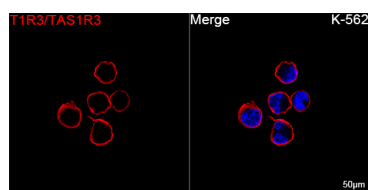
Store at -20°C. Avoid freeze / thaw cycles.

Buffer: PBS with 0.09% Sodium azide,0.05% BSA,50% glycerol,pH7.3.

Validation Data



Western blot analysis of various lysates using T1R3/TAS1R3 Rabbit mAb (A26851) at 1:72000 dilution incubated overnight at 4°C.
Secondary antibody: HRP-conjugated Goat anti-Rabbit IgG (H+L) (AS014) at 1:10000 dilution.
Lysates/proteins: 25 µg per lane.
Blocking buffer: 3% nonfat dry milk in TBST.
Detection: ECL Basic Kit (RM00020).
Exposure time: 1s.



Confocal imaging of K-562 cells using T1R3/TAS1R3 Rabbit mAb (A26851, dilution 1:200) followed by a further incubation with Cy3 Goat Anti-Rabbit IgG (H+L) (AS007, dilution 1:500) (Red). DAPI was used for nuclear staining (Blue). Objective: 100x.