

A26846

Leader in Biomolecular Solutions for Life Science



DMP1 Rabbit mAb

Catalog No.: A26846

Recombinant

Basic Information

Observed MW

130kDa

Calculated MW

56kDa

Category

SMab Recombinant Monoclonal
Antibody

Applications

WB,IF/ICC,ELISA

Cross-Reactivity

Human

Background

Dentin matrix acidic phosphoprotein is an extracellular matrix protein and a member of the small integrin binding ligand N-linked glycoprotein family. This protein, which is critical for proper mineralization of bone and dentin, is present in diverse cells of bone and tooth tissues. The protein contains a large number of acidic domains, multiple phosphorylation sites, a functional arg-gly-asg cell attachment sequence, and a DNA binding domain. In undifferentiated osteoblasts it is primarily a nuclear protein that regulates the expression of osteoblast-specific genes. During osteoblast maturation the protein becomes phosphorylated and is exported to the extracellular matrix, where it orchestrates mineralized matrix formation. Mutations in the gene are known to cause autosomal recessive hypophosphatemia, a disease that manifests as rickets and osteomalacia. The gene structure is conserved in mammals. Two transcript variants encoding different isoforms have been described for this gene.

Recommended Dilutions

WB 1:8000 - 1:30000

IF/ICC 1:200 - 1:800

ELISA Recommended starting concentration is 1 µg/mL. Please optimize the concentration based on your specific assay requirements.

Immunogen Information

Gene ID

1758

Swiss Prot

Q13316

Immunogen

Synthetic peptide. This information is considered to be commercially sensitive.

Synonyms

ARHP; ARHR; DMP-1

Contact

 www.abclonal.com

Product Information

Source

Rabbit

Isotype

IgG

Purification

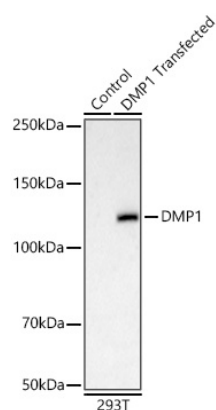
Affinity purification

Storage

Store at -20°C. Avoid freeze / thaw cycles.

Buffer: PBS with 0.09% Sodium azide, 0.05% BSA, 50% glycerol, pH7.3.

Validation Data



Western blot analysis of lysates from wild type (WT) and 293T cells transfected with DMP1 using DMP1 Rabbit mAb (A26846) at 1:17000 dilution incubated overnight at 4°C.

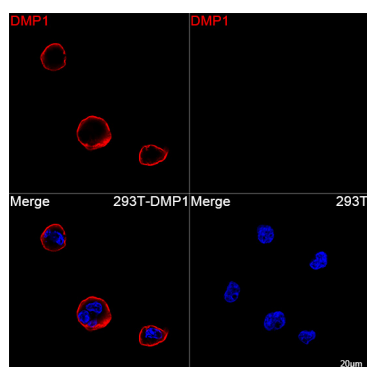
Secondary antibody: HRP-conjugated Goat anti-Rabbit IgG (H+L) (AS014) at 1:10000 dilution.

Lysates/proteins: 20 µg per lane.

Blocking buffer: 3% nonfat dry milk in TBST.

Detection: ECL Basic Kit (RM00020)

Exposure time: 60s.



Confocal imaging of 293T cells transfected with DMP1 and 293T cells using DMP1 Rabbit mAb (A26846, dilution 1:200) followed by a further incubation with Cy3 Goat Anti-Rabbit IgG (H+L) (AS007, dilution 1:500) (Red). DAPI was used for nuclear staining (Blue). Objective: 100x.