

A26789

Leader in Biomolecular Solutions for Life Science



Cytokeratin AE3 Rabbit pAb

Catalog No.: A26789

Basic Information

Observed MW

28-60kDa

Calculated MW

66kDa/65kDa/64kDa/56kDa/62kDa/60kDa/51kDa

Category

Polyclonal Antibody

Applications

WB,IHC-P,ELISA

Cross-Reactivity

Human

Background

The protein encoded by this gene is a member of the keratin gene family. The type II cytokeratins consist of basic or neutral proteins which are arranged in pairs of heterotypic keratin chains coexpressed during differentiation of simple and stratified epithelial tissues. This type II cytokeratin is specifically expressed in the spinous and granular layers of the epidermis with family member KRT10 and mutations in these genes have been associated with bullous congenital ichthyosiform erythroderma. The type II cytokeratins are clustered in a region of chromosome 12q12-q13.

Recommended Dilutions

WB 1:3000 - 1:18000

IHC-P 1:500 - 1:2000

ELISA Recommended starting concentration is 1 µg/mL. Please optimize the concentration based on your specific assay requirements.

Immunogen Information

Gene ID

3848/3849/3850/3851/3852/3853/3855/3856

Swiss Prot

P04264/P35908/P12035/P19013/P13647/P02538/P08729

Immunogen

Synthetic peptide. This information is considered to be commercially sensitive.

Synonyms

K1; CK1; EHK; AEI2; EHK1; EPPK; KRT1A; NEPPK

Contact

 www.abclonal.com

Product Information

Source

Rabbit

Isotype

IgG

Purification

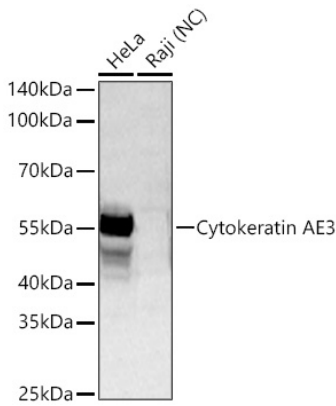
Affinity purification

Storage

Store at -20°C. Avoid freeze / thaw cycles.

Buffer: PBS with 0.09% Sodium azide,50% glycerol,pH7.3.

Validation Data



Western blot analysis of various lysates using Cytokeratin AE3 Rabbit pAb (A26789) at 1:3000 dilution incubated overnight at 4°C.

Secondary antibody: HRP-conjugated Goat anti-Rabbit IgG (H+L) (AS014) at 1:10000 dilution.

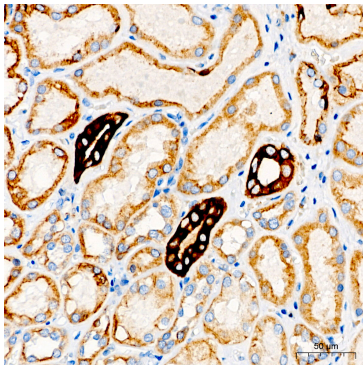
Lysates/proteins: 25 µg per lane.

Blocking buffer: 3% nonfat dry milk in TBST.

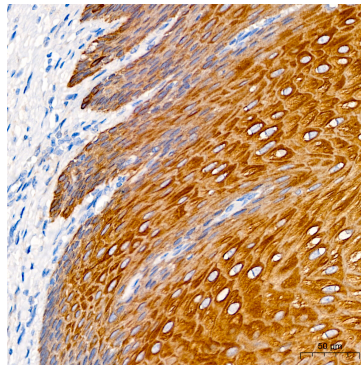
Detection: ECL Basic Kit (RM00020).

Negative control (NC): Raji

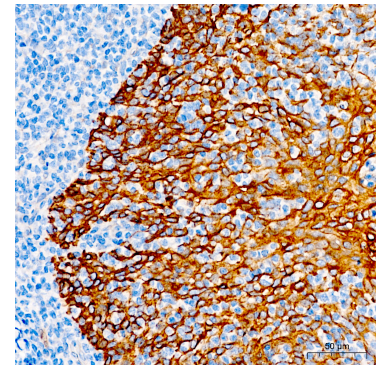
Exposure time: 10s.



Immunohistochemistry analysis of paraffin-embedded Human kidney tissue using Cytokeratin AE3 Rabbit pAb (A26789) at a dilution of 1:1000 (40x lens). High pressure antigen retrieval performed with 0.01M Tris-EDTA Buffer(pH 9.0) prior to IHC staining.



Immunohistochemistry analysis of paraffin-embedded Human esophagus tissue using Cytokeratin AE3 Rabbit pAb (A26789) at a dilution of 1:1000 (40x lens). High pressure antigen retrieval performed with 0.01M Tris-EDTA Buffer(pH 9.0) prior to IHC staining.



Immunohistochemistry analysis of paraffin-embedded Human tonsil tissue using Cytokeratin AE3 Rabbit pAb (A26789) at a dilution of 1:1000 (40x lens). High pressure antigen retrieval performed with 0.01M Tris-EDTA Buffer(pH 9.0) prior to IHC staining.