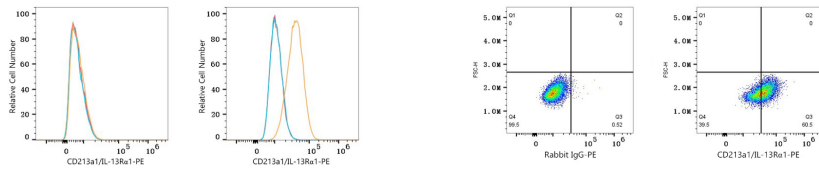


Validation Data



Flow cytometry: 1×10^6 Jurkat cells (negative control, left) and MCF7 cells (right) were surface-stained with PE Rabbit anti-Human CD213a1/IL-13R α 1 mAb (A26762, 5 μ l/Test, orange line) or PE Rabbit IgG isotype control (A24172, 5 μ l/Test, blue line). Non-fluorescently stained cells were used as blank control (red line).

Flow cytometry: 1×10^6 MCF7 cells were surface-stained with PE Rabbit IgG isotype control (A24172, 5 μ l/Test, left) or PE Rabbit anti-Human CD213a1/IL-13R α 1 mAb (A26762, 5 μ l/Test, right).