

A26721

Leader in Biomolecular Solutions for Life Science



# ABflo® 488 Rabbit anti-Human CD52 mAb

Catalog No.: A26721

## Basic Information

### Observed MW

### Calculated MW

7kDa

### Category

SMab Recombinant Monoclonal  
Antibody

### Applications

FC

### Cross-Reactivity

Human

### Conjugate

ABflo® 488. Ex:491nm. Em:516nm.

## Background

Involved in positive regulation of cytosolic calcium ion concentration. Predicted to be located in extracellular region and plasma membrane. Predicted to be intrinsic component of plasma membrane. Predicted to be active in sperm midpiece.

## Recommended Dilutions

FC 5 µl per 10<sup>6</sup> cells in  
100 µl volume

## Immunogen Information

### Gene ID

1043

### Swiss Prot

P31358

### Immunogen

A synthetic peptide corresponding to a sequence within amino acids 1-61 of human CD52 (NP\_001794.2).

### Synonyms

HE5; CDW52; EDDM5

## Contact



[www.abclonal.com](http://www.abclonal.com)

## Product Information

### Source

Rabbit

### Isotype

IgG

### Purification

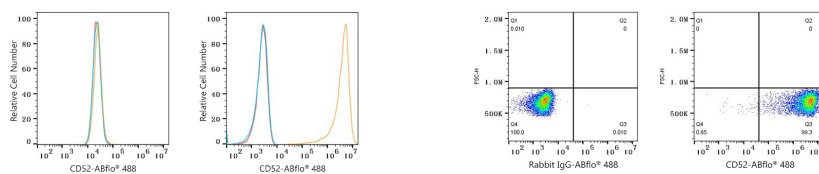
Affinity purification

### Storage

Store at 2-8°C. Avoid freeze.

Buffer: PBS with 0.09% Sodium azide,0.2% BSA,pH7.3.

## Validation Data



Flow cytometry:  $1 \times 10^6$  HAP1 cells (negative control, left) and Human PBMC (right) were surface-stained with ABflo® 488 Rabbit anti-Human CD52 mAb (A26721, 5  $\mu$ l/Test, orange line) or ABflo® 488 Rabbit IgG isotype control (A22069, 5  $\mu$ l/Test, blue line). Non-fluorescently stained cells were used as blank control (red line).

Flow cytometry:  $1 \times 10^6$  Human PBMC were surface-stained with ABflo® 488 Rabbit IgG isotype control (A22069, 5  $\mu$ l/Test, left) or ABflo® 488 Rabbit anti-Human CD52 mAb (A26721, 5  $\mu$ l/Test, right).