

A26658

Leader in Biomolecular Solutions for Life Science



PE Rabbit anti-Human GPRC5D mAb

Catalog No.: A26658

Basic Information

Observed MW

Calculated MW

34kDa/36kDa/38kDa

Category

SMab Recombinant Monoclonal
Antibody

Applications

FC

Cross-Reactivity

Human

Conjugate

PE. Ex:565nm. Em:574nm.

Background

The protein encoded by this gene is a member of the G protein-coupled receptor family; however, the specific function of this gene has not yet been determined.

Recommended Dilutions

FC 5 μ l per 10^6 cells in
100 μ l volume

Immunogen Information

Gene ID
55507

Swiss Prot
Q9NZD1

Immunogen

Synthetic peptide. This information is considered to be commercially sensitive.

Synonyms

GPRC5D

Contact

 www.abclonal.com

Product Information

Source
Rabbit

Isotype
IgG

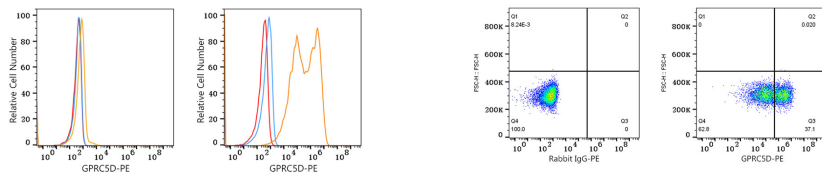
Purification
Affinity purification

Storage

Store at 2-8°C. Avoid freeze.

Buffer: PBS with 0.09% Sodium azide, 0.2% BSA, pH7.3.

Validation Data



Flow cytometry: 1×10^6 293T cells (negative control, left) and 293T (Transfection, right) cells were surface-stained with PE Rabbit anti-Human GPRC5D mAb (A26658, 5 μ l/Test, orange line) or PE Rabbit IgG isotype control (A24172, 5 μ l/Test, blue line). Non-fluorescently stained cells were used as blank control (red line).

Flow cytometry: 1×10^6 293T (Transfection) cells were surface-stained with PE Rabbit IgG isotype control (A24172, 5 μ l/Test, left) or PE Rabbit anti-Human GPRC5D mAb (A26658, 5 μ l/Test, right).