

A2662

Leader in Biomolecular Solutions for Life Science



Cytokeratin 5 Rabbit pAb

Catalog No.: A2662 **2 Publications**

Basic Information

Observed MW

62 kDa

Calculated MW

62 kDa

Category

Polyclonal Antibody

Applications

WB,IHC-P,IF/ICC,IP,ELISA

Cross-Reactivity

Human,Mouse

Background

The protein encoded by this gene is a member of the keratin gene family. The type II cytokeratins consist of basic or neutral proteins which are arranged in pairs of heterotypic keratin chains coexpressed during differentiation of simple and stratified epithelial tissues. This type II cytokeratin is specifically expressed in the basal layer of the epidermis with family member KRT14. Mutations in these genes have been associated with a complex of diseases termed epidermolysis bullosa simplex. The type II cytokeratins are clustered in a region of chromosome 12q12-q13.

Recommended Dilutions

WB 1:500 - 1:5000

IP 0.5 µg - 4 µg antibody
for 200 µg - 400 µg
extracts of whole cells

IF/ICC 1:50 - 1:200

IHC-P 1:50 - 1:200

ELISA Recommended starting
concentration is 1
µg/mL. Please optimize
the concentration
based on your specific
assay requirements.

Immunogen Information

Gene ID

3852

Swiss Prot

P13647

Immunogen

Synthetic peptide. This information is considered to be commercially sensitive.

Synonyms

K5; CK5; DDD; DDD1; EBS1; EBS2; EBS2A; EBS2B; EBS2C; EBS2D; EBS2E; EBS2F; KRT5A; Cytokeratin 5 (KRT5)

Product Information

Source

Rabbit

Isotype

IgG

Purification

Affinity purification

Storage

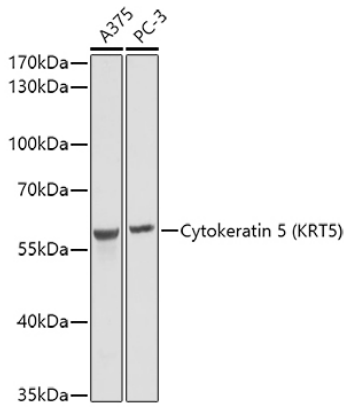
Store at -20°C. Avoid freeze / thaw cycles.

Buffer: PBS with 0.09% Sodium azide,50% glycerol,pH7.3.

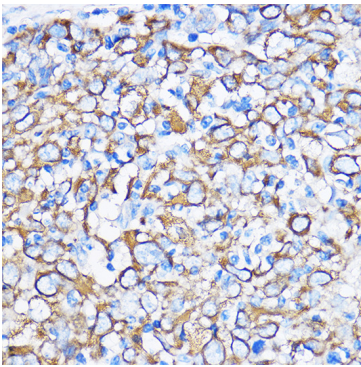
Contact

 www.abclonal.com

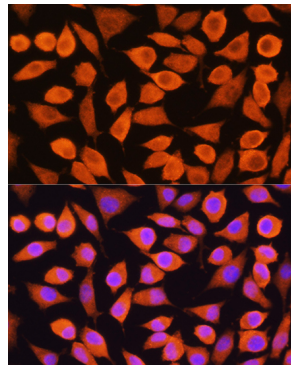
Validation Data



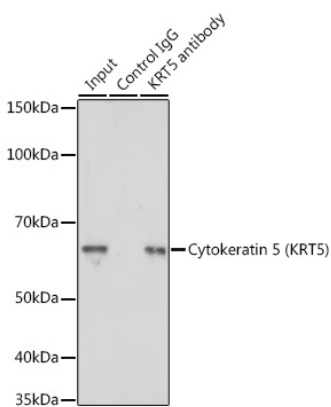
Western blot analysis of various lysates using Cytokeratin 5 Rabbit pAb (A2662) at 1:1000 dilution.
Secondary antibody: HRP-conjugated Goat anti-Rabbit IgG (H+L) (AS014) at 1:10000 dilution.
Lysates/proteins: 25µg per lane.
Blocking buffer: 3% nonfat dry milk in TBST.
Detection: ECL Basic Kit (RM00020).
Exposure time: 1s.



Immunohistochemistry analysis of paraffin-embedded Human esophageal cancer using Cytokeratin 5 Rabbit pAb (A2662) at dilution of 1:100 (40x lens). Microwave antigen retrieval performed with 0.01M PBS Buffer (pH 7.2) prior to IHC staining.



Immunofluorescence analysis of L929 cells using Cytokeratin 5 Rabbit pAb (A2662) at dilution of 1:100. Secondary antibody: Cy3-conjugated Goat anti-Rabbit IgG (H+L) (AS007) at 1:500 dilution. Blue: DAPI for nuclear staining.



Immunoprecipitation analysis of 200 µg extracts of A-431 cells using 3 µg Cytokeratin 5 antibody (A2662). Western blot was performed from the immunoprecipitate using Cytokeratin 5 antibody (A2662) at a dilution of 1:5000.