

A2657

Leader in Biomolecular Solutions for Life Science



# AMPH Rabbit pAb

Catalog No.: A2657

## Basic Information

---

### Observed MW

76kDa

### Calculated MW

76kDa

### Category

Polyclonal Antibody

### Applications

WB

### Cross-Reactivity

Human, Mouse

## Background

---

This gene encodes a protein associated with the cytoplasmic surface of synaptic vesicles. A subset of patients with stiff-man syndrome who were also affected by breast cancer are positive for autoantibodies against this protein. Alternate splicing of this gene results in two transcript variants encoding different isoforms. Additional splice variants have been described, but their full length sequences have not been determined. A pseudogene of this gene is found on chromosome 11.

## Recommended Dilutions

---

WB 1:500 - 1:2000

## Immunogen Information

---

### Gene ID

273

### Swiss Prot

P49418

### Immunogen

Recombinant protein of human AMPH

### Synonyms

AMPH1; AMPH

## Contact

---



[www.abclonal.com](http://www.abclonal.com)

## Product Information

---

### Source

Rabbit

### Isotype

IgG

### Purification

Affinity purification

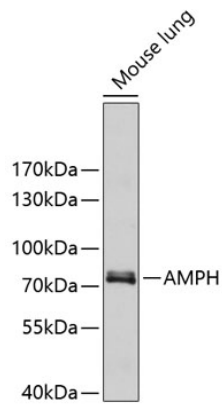
### Storage

Store at -20°C. Avoid freeze / thaw cycles.

Buffer: PBS with 0.02% sodium azide, 50% glycerol, pH7.3.

## Validation Data

---



Western blot analysis of extracts of mouse lung, using AMPH antibody (A2657).  
Secondary antibody: HRP Goat Anti-Rabbit IgG (H+L) (AS014) at 1:10000 dilution.  
Lysates/proteins: 25µg per lane.  
Blocking buffer: 3% nonfat dry milk in TBST.