

A26499PM

Leader in Biomolecular Solutions for Life Science



FKBP10 Rabbit PolymAb®

Catalog No.: A26499PM

Basic Information

Observed MW

78kDa

Calculated MW

64kDa

Category

SMab Recombinant Monoclonal
Antibody

Applications

WB,IF/ICC,ELISA

Cross-Reactivity

Human,Mouse,Rat

Background

The protein encoded by this gene belongs to the FKBP-type peptidyl-prolyl cis/trans isomerase (PPIase) family. This protein localizes to the endoplasmic reticulum and acts as a molecular chaperone. Alternatively spliced variants encoding different isoforms have been reported, but their biological validity has not been determined.

Recommended Dilutions

WB 1:1000 - 1:150000

IF/ICC 1:600 - 1:2400

ELISA Recommended starting concentration is 1 µg/mL. Please optimize the concentration based on your specific assay requirements.

Immunogen Information

Gene ID

60681

Swiss Prot

Q96AY3

Immunogen

Synonyms

OI6; BRKS; OI11; TLH1; BRKS1; FKBP65; PPIASE; hFKBP65

Contact

 www.abclonal.com

Product Information

Source

Rabbit

Isotype

IgG

Purification

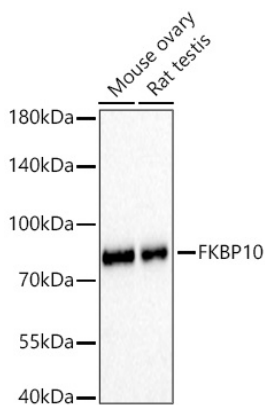
Affinity purification

Storage

Store at -20°C. Avoid freeze / thaw cycles.

Buffer: PBS with 0.05% proclin300,0.05% BSA,50% glycerol,pH7.3.

Validation Data



Western blot analysis of various lysates using FKBP10 Rabbit PolymAb® (A26499PM) at 1:3000 dilution incubated overnight at 4°C.

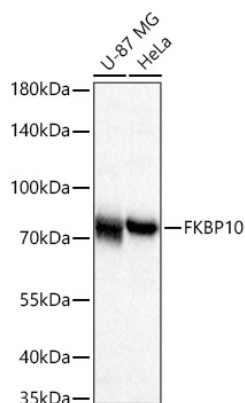
Secondary antibody: HRP-conjugated Goat anti-Rabbit IgG (H+L) (AS014) at 1:10000 dilution.

Lysates/proteins: 25 µg per lane.

Blocking buffer: 3% nonfat dry milk in TBST.

Detection: ECL Basic Kit (RM00020).

Exposure time: 60s.



Western blot analysis of various lysates using FKBP10 Rabbit PolymAb® (A26499PM) at 1:15000 dilution incubated overnight at 4°C.

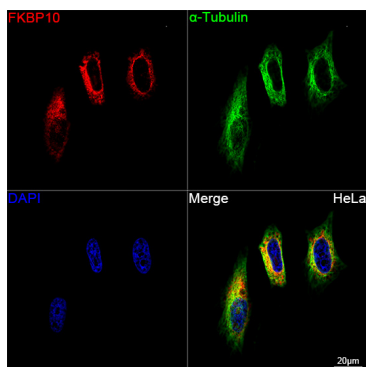
Secondary antibody: HRP-conjugated Goat anti-Rabbit IgG (H+L) (AS014) at 1:10000 dilution.

Lysates/proteins: 25 µg per lane.

Blocking buffer: 3% nonfat dry milk in TBST.

Detection: ECL Basic Kit (RM00020).

Exposure time: 0.5s.



Confocal imaging of HeLa cells using FKBP10 Rabbit PolymAb® (A26499PM, dilution 1:1200)

followed by a further incubation with Cy3 Goat Anti-Rabbit IgG (H+L) (AS007, dilution 1:500) (Red). The

cells were counterstained with α-Tubulin Mouse mAb (AC012, dilution 1:400) followed by incubation with

ABflo® 488-conjugated Goat Anti-Mouse IgG (H+L) Ab (AS076, dilution 1:500) (Green). DAPI was used for

nuclear staining (Blue). Objective:

100x.