

A26426PM

Leader in Biomolecular Solutions for Life Science



## ICAM2/CD102 Rabbit PolymAb®

Catalog No.: A26426PM

### Basic Information

#### Observed MW

50-60kDa

#### Calculated MW

31kDa

#### Category

SMab Recombinant Monoclonal  
Antibody

#### Applications

WB,IHC-P,ELISA

#### Cross-Reactivity

Mouse

### Background

Predicted to enable integrin binding activity. Predicted to be involved in cell adhesion. Located in microvillus; plasma membrane; and uropod. Is integral component of plasma membrane. Is expressed in central nervous system; extraembryonic component; female reproductive system; retina; and vascular element. Orthologous to human ICAM2 (intercellular adhesion molecule 2).

### Recommended Dilutions

**WB** 1:1000 - 1:4000

**IHC-P** 1:500 - 1:2000

**ELISA** Recommended starting concentration is 1 µg/mL. Please optimize the concentration based on your specific assay requirements.

### Immunogen Information

#### Gene ID

15896

#### Swiss Prot

P35330

#### Immunogen

Recombinant protein (or fragment). This information is considered to be commercially sensitive.

#### Synonyms

CD102; Ly-60; Icam-2

### Contact

 [www.abclonal.com](http://www.abclonal.com)

### Product Information

#### Source

Rabbit

#### Isotype

IgG

#### Purification

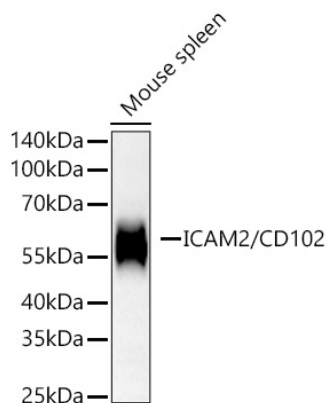
Affinity purification

#### Storage

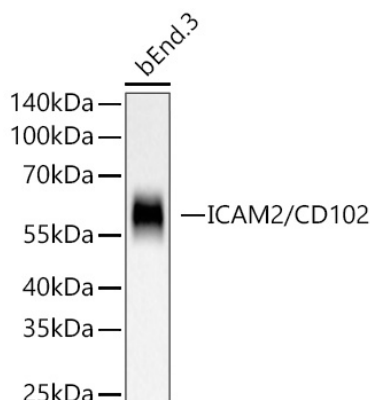
Store at -20°C. Avoid freeze / thaw cycles.

Buffer: PBS containing 50% glycerol and 0.05% BSA, preserved with proclin300 or sodium azide (as specified on the Certificate of Analysis), pH 7.3.

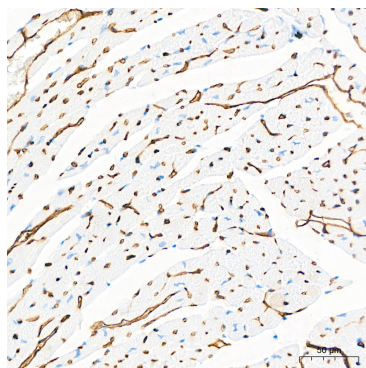
## Validation Data



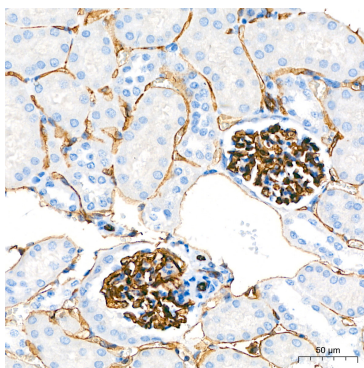
Western blot analysis of lysates from Mouse spleen using ICAM2/CD102 Rabbit PolymAb® (A26426PM) at 1:2000 dilution incubated overnight at 4°C. Secondary antibody: HRP-conjugated Goat anti-Rabbit IgG (H+L) (AS014) at 1:10000 dilution.  
Lysates/proteins: 25 µg per lane.  
Blocking buffer: 3% nonfat dry milk in TBST.  
Detection: ECL Basic Kit (RM00020).  
Exposure time: 90s.



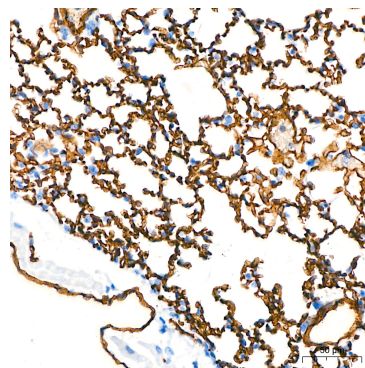
Western blot analysis of lysates from bEnd.3 cells using ICAM2/CD102 Rabbit PolymAb® (A26426PM) at 1:2000 dilution incubated overnight at 4°C. Secondary antibody: HRP-conjugated Goat anti-Rabbit IgG (H+L) (AS014) at 1:10000 dilution.  
Lysates/proteins: 25 µg per lane.  
Blocking buffer: 3% nonfat dry milk in TBST.  
Detection: ECL Basic Kit (RM00020).  
Exposure time: 20s.



Immunohistochemistry analysis of paraffin-embedded Mouse heart tissue using ICAM2/CD102 Rabbit PolymAb® (A26426PM) at a dilution of 1:1000 (40x lens). High pressure antigen retrieval performed with 0.01M Tris-EDTA Buffer(pH 9.0) prior to IHC staining.



Immunohistochemistry analysis of paraffin-embedded Mouse kidney tissue using ICAM2/CD102 Rabbit PolymAb® (A26426PM) at a dilution of 1:1000 (40x lens). High pressure antigen retrieval performed with 0.01M Tris-EDTA Buffer(pH 9.0) prior to IHC staining.



Immunohistochemistry analysis of paraffin-embedded Mouse lung tissue using ICAM2/CD102 Rabbit PolymAb® (A26426PM) at a dilution of 1:1000 (40x lens). High pressure antigen retrieval performed with 0.01M Tris-EDTA Buffer(pH 9.0) prior to IHC staining.