

A26405

Leader in Biomolecular Solutions for Life Science



ABflo® 647 Rabbit anti-Human CD158 (KIR2DL1/S1/S2/S3/S5) mAb

Catalog No.: A26405

Basic Information

Observed MW

Calculated MW

34kDa

Category

Monoclonal Antibody

Applications

FC

Cross-Reactivity

Human

Conjugate

ABflo® 647. Ex:648nm. Em:664nm.

Background

Killer cell immunoglobulin-like receptors (KIRs) are transmembrane glycoproteins expressed by natural killer cells and subsets of T cells. The KIR genes are polymorphic and highly homologous and they are found in a cluster on chromosome 19q13.4 within the 1 Mb leukocyte receptor complex (LRC). The gene content of the KIR gene cluster varies among haplotypes, although several "framework" genes are found in all haplotypes (KIR3DL3, KIR3DP1, KIR3DL4, KIR3DL2). The KIR proteins are classified by the number of extracellular immunoglobulin domains (2D or 3D) and by whether they have a long (L) or short (S) cytoplasmic domain. KIR proteins with the long cytoplasmic domain transduce inhibitory signals upon ligand binding via an immune tyrosine-based inhibitory motif (ITIM), while KIR proteins with the short cytoplasmic domain lack the ITIM motif and instead associate with the TYRO protein tyrosine kinase binding protein to transduce activating signals. The ligands for several KIR proteins are subsets of HLA class I molecules; thus, KIR proteins are thought to play an important role in regulation of the immune response.

Recommended Dilutions

FC 5 µl per 10⁶ cells in
100 µl volume

Immunogen Information

Gene ID

3810/3808/3806/3802/100132285

Swiss Prot

Q14954/Q14953/Q14952/P43631/P43626

Immunogen

Recombinant protein (or fragment). This information is considered to be commercially sensitive.

Synonyms

NKAT9; CD158G ; CD158A ; NKAT1; CD158H; CD158J; NKAT5

Contact

 www.abclonal.com

Product Information

Source

Rabbit

Isotype

IgG

Purification

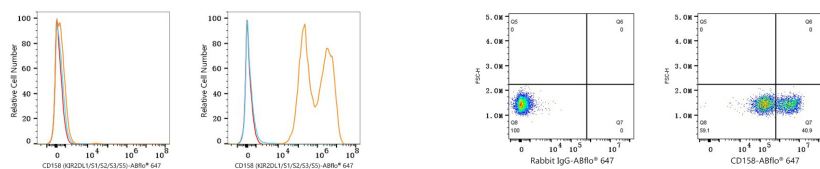
Affinity purification

Storage

Store at 2-8°C. Avoid freeze.

Buffer: PBS with 0.09% Sodium azide, 0.2% BSA, pH7.3.

Validation Data



Flow cytometry: 1X10⁶ 293T cells (negative control, left) and 293T (Transfection, right) cells were surface-stained with ABflo® 647 Rabbit anti-Human CD158 (KIR2DL1/S1/S2/S3/S5) mAb (A26405, 5 µl/Test, orange line) or ABflo® 647 Rabbit IgG isotype control (A22070, 5 µl/Test, blue line). Non-fluorescently stained cells were used as blank control (red line).

Flow cytometry: 1X10⁶ 293T (Transfection) cells were surface-stained with ABflo® 647 Rabbit IgG isotype control (A22070, 5 µl/Test, left) or ABflo® 647 Rabbit anti-Human CD158 (KIR2DL1/S1/S2/S3/S5) mAb (A26405, 5 µl/Test, right).